



9.15 CITY OF WILDWOOD

This section presents the jurisdictional annex for the City of Wildwood. The annex includes a general overview of the City of Wildwood; an assessment of the City of Wildwood’s risk, vulnerability, and mitigation capabilities; and a prioritized action plan to implement prior to a disaster to reduce future losses and achieve greater resilience to natural hazards.

9.15.1 Hazard Mitigation Planning Team

The City of Wildwood followed the planning process described in Section 3 (Planning Process). This annex was developed over the course of several months with input from many jurisdiction representatives. All departments were asked to contribute to the annex development through reviewing and contributing to the capability assessment, reporting on the status of previously identified actions, and participating in action identification and prioritization. The coronavirus pandemic resulted in a strain on local resources that limited some participation, but every effort was made to connect with staff and stakeholders and gain diverse input. Due to safety precautions, all meetings were held virtually. The following table summarizes who participated and in what capacity. Additional documentation on the municipality’s planning process through Planning Partnership meetings is included in Section 3 (Planning Process) and Appendix C (Meeting Documentation).

Table 9.15-1. Hazard Mitigation Planning Team and Contributors

Primary Point of Contact		Alternate Point of Contact
Name / Title: Daniel Dunn, OEM Coordinator Address: 4400 New Jersey Ave. Wildwood, NJ 08260 Phone Number: (609)846-2038 Email: d.dunn@wildwoodnj.org		Name / Title: Steve Booy, Zoning Officer, NFIP Floodplain Administrator Address: 4400 New Jersey Ave. Wildwood, NJ 08260 Phone Number: (609)522-2444 Email: sbooy@wildwoodnj.org
NFIP Floodplain Administrator		
Name / Title: Steve Booy, Zoning Officer/NFIP Floodplain Administrator Address: 4400 New Jersey Ave. Wildwood, NJ 08260 Phone Number: (609) 522-2444 Email: sbooy@wildwoodnj.org		
Name	Title	Method of Participation
Daniel Dunn	OEM Coordinator	Mitigation Planning POC. Data collection and Annex development. Provided input on mitigation strategy. Reviewed and signed off on annex.
Steve Booy	Zoning Officer	Mitigation Planning Alternate POC. NFIP Floodplain Administration. Data collection and Annex development. Provided input on mitigation strategy. Reviewed and signed off on annex.
Kate Dunn	Technical Assistant to the Construction Official/Planning & Zoning Board Secretary	Data collection related to matters related to construction, development, and the Uniform Construction Code.
Jeannette J. Powers	Fiscal/CFO	Reviewed and signed off on annex
Rick Allen	Construction Official	Reviewed and signed off on annex
Richard Harrow	Director of Public Works	Reviewed and signed off on annex
Ernie Troiano III	Chief, Fire Department	Reviewed and signed off on annex



9.15.2 Jurisdiction Profile



The City of Wildwood is located on a barrier island along the Atlantic Ocean coastline of Cape May County, New Jersey. It is bounded on the north-northeast by the Borough of West Wildwood, Township of Middle and the City of North Wildwood, on the east-southeast by the Atlantic Ocean, on the south-southwest by the Borough of Wildwood Crest and the Atlantic Ocean, and the west by the Township of Lower. It is part of the Ocean City Metropolitan Statistical Area.

The City of Wildwood is a 1.3 square mile seashore resort City that is a popular summer tourist destination for hundreds of thousands of visitors each year. The City of Wildwood was created in 1912 when the former Boroughs of Wildwood and Holly Beach consolidated to form the City of Wildwood. The City is famous for its large boardwalk with numerous shops, restaurants, amusement piers and waterparks and for being home to the World's largest, finest, and safest bathing beach. The City is home to many hotels/motels, apartment/rooming houses, bed and breakfasts, restaurants, bars/nightclubs, as well as many condos and single-family residences.

Wildwood is governed by a three-member commission under the Walsh Act Commission form of municipal government. The city is one of 30 municipalities (of the 565) statewide that use this form of government. The governing body is comprised of three commissioners, who are elected at-large on a nonpartisan basis to serve concurrent four-year terms of office, with the vote taking place as part of the November general election. At a reorganization conducted after each election, the commission selects one of its members to serve as mayor and gives each commissioner an assigned department to oversee and manage.

Wildwood is also used as a collective term referring to the four communities with Wildwood comprising part of the municipality name — specifically the Borough of Wildwood Crest, City of Wildwood, Borough of West Wildwood and the City of North Wildwood — together with Diamond Beach, a portion of Lower Township situated on the island. Collectively, these communities are known as "The Wildwoods."

According to the U.S. Census, the 2010 population for the City of Wildwood was 5,325. The estimated 2018 population was 5,073, a 4.7 percent decrease from the 2010 Census. It is important to note that the summer seasonal population can swell to 250,000 or more. Data from the 2018 U.S. Census American Community Survey indicated that 6.0 percent of the population is 5 years of age or younger and 19.5 percent is 65 years of age or older. Communities must deploy a support system that enables all populations to safely reach shelters or to quickly evacuate a hazard area.

9.15.3 Growth/Development Trends

Understanding how past, current, and projected development patterns have or are likely to increase or decrease risk in hazard areas is a key component to understanding a jurisdiction's overall risk to its hazards of concern. Table 9.15-2 summarizes recent and expected future development trends, including major residential/commercial development and major infrastructure development. Figure 9.15-1 at the end of this annex illustrates the geographically-delineated hazard areas and the location of potential new development.



Table 9.15-2. Recent and Expected Future Development

Type of Development	2015		2016		2017		2018		2019	
Number of Building Permits for New Construction Issued Since the Previous HMP										
	Total	Within SFHA	Total	Within SFHA	Total	Within SFHA	Total	Within SFHA	Total	Within SFHA
Single and Two-Family Units	7	7	4	4	14	14	4	4	8	8
Multi-Family	0	0	0	0	0	0	0	0	6	6
Other (commercial, mixed-use, etc.)	1	1	2	2	3	3	4	4	1	1
Property or Development Name	Type of Development		# of Units / Structures		Location (address and/or block and lot)		Known Hazard Zone(s)*		Description / Status of Development	
Recent Major Development and Infrastructure from 2015 to Present										
Waves Hotel	Hotel		42 rooms		4001 Atlantic Ave.		1- and 0.2-Percent Annual Chance Flood Event Category 1, 2, 3, 4 Storm		Completed/Occupied	
Mudhen Brewing Co.	Brewery/Restaurant		1		127 W. Rio Grande Ave.		1- and 0.2-Percent Annual Chance Flood Event Category 1,2,3,4 Storm		Completed/Occupied	
Cap'n Jacks Bar & Grill	Restaurant/Bar		1		3800 Boardwalk		Coastal Erosion Hazard Area 1- and 0.2-Percent Annual Chance Flood Event Category 1, 2, 3, 4 Storm		Completed/Occupied	
Rio Grande Ave. Gateway	Roadway/Gateway		N/A		W. Rio Grande Ave.		SFHA		Completed	
Known or Anticipated Major Development and Infrastructure in the Next Five (5) Years										
3600 Pacific Ave.	Commercial/Residential		72 units		3600 Pacific Ave.		1- and 0.2-Percent Annual Chance Flood Event Category 1,2,3,4 Storm		Waiting on CAFRA approval	
Oceanic Motel	Hotel Expansion		TBD		4600 Ocean Ave.		1- and 0.2-Percent Annual Chance Flood Event Category 1,2,3,4 Storm		In progress	

* Only location-specific hazard zones or vulnerabilities identified.

9.15.4 Capability Assessment

The City of Wildwood performed an inventory and analysis of existing capabilities, plans, programs, and policies that enhance its ability to implement mitigation strategies. Section 6 (Capability Assessment) describes the components included in the capability assessment and their significance for hazard mitigation planning. This section summarizes the following findings of the assessment:

- An assessment of planning, legal and regulatory capabilities.
- Development and permitting capabilities.





- An assessment of administrative and technical capabilities.
- An assessment of fiscal capabilities.
- An assessment of education and outreach capabilities.
- Classification under various community mitigation programs.
- The community’s adaptive capacity.
- Information on National Flood Insurance Program (NFIP) compliance.

For a community to succeed in reducing long-term risk, hazard mitigation must be integrated into the day-to-day local government operations. As part of this planning effort, planning/policy documents were reviewed, and each jurisdiction was surveyed to obtain a better understanding of their progress in plan integration. Areas with current mitigation integration are summarized in Capability Assessment (Section 9.15.4). The City of Wildwood identified specific integration activities that will be incorporated into municipal procedures are included in the updated mitigation strategy.

PLANNING, LEGAL AND REGULATORY CAPABILITY

The table below summarizes the legal and regulatory tools that are available to the City of Wildwood and where hazard mitigation has been integrated.

Table 9.15-3. Planning, Legal and Regulatory Capability

	Do you have this? (Yes/No)	Authority that enforces (Federal, State, Regional, County, Local)	Is this State Mandated?	Have aspects of this been integrated into your mitigation plan?	
				If yes-how? Describe in comments	If no - can it be a mitigation action? If yes, add Mitigation Action #.
Codes, Ordinances, & Requirements					
Building Code	Yes	State & Local	Yes	Yes	2021-WILDWOOD-008
<p><i>Comment:</i></p> <ul style="list-style-type: none"> • State mandated on local level under NJAC 5:23-3.14. International Building Code – New Jersey Edition, 2018, NJAC 5:24-3.14 Adopted 9/3/2019 (with NJ edits dated March 14, 2020 coming soon) • Uniform Construction Code, Chapter 11A, adopted by the Board of Commissioners. There is hereby established in the City of Wildwood a State Uniform Construction Code enforcing agency to be known as the "Department of Inspections," consisting of a Construction Official, Building Subcode Official and Fire Protection Subcode Official, Plumbing Subcode Official, Electrical Subcode Official and such other subcode officials for such additional subcodes. The Construction Official shall be the chief administrator of the enforcing agency. • Buildings, Chapter 11, adopted by the Board of Commissioners. A code is hereby adopted establishing rules and regulations for the construction, alteration, repair, removal, demolition, use, location, occupancy and maintenance of all buildings and structures and their service equipment; providing for certain permits and licenses; and providing penalties for its violation. A copy of the code is attached to and made a part of this section without the text of the code being included herein. • Chapter 11 includes Design Standards for stormwater management, for example, storm drain inlets above shall comply with the standards to control passage of solid and floatable materials through storm drain inlets. For purposes of this paragraph, "solid and floatable materials" means sediment, debris, trash and other floating, suspended, or settleable solids. Also, within Chapter 11 is a section regulating bulkheads. It states that the height of any bulkhead to be constructed will be a minimum of 8'. The City is currently developing an updated bulkhead ordinance. 					
Zoning Code	Yes	State & Local	Yes – if municipality has a Planning Board	Yes	Yes
<p><i>Comment:</i></p> <ul style="list-style-type: none"> • State permissive on local level. Per State of NJ Municipal Land Use Law (MLUL) L. 1975, s. 2, eff Aug 1, 1976, 40-55D-62: 49. Power to zone, requires all jurisdictions to have current zoning and other land development ordinances after the planning board has adopted the land use element and master plan. 					



	Do you have this? (Yes/No)	Authority that enforces (Federal, State, Regional, County, Local)	Is this State Mandated?	Have aspects of this been integrated into your mitigation plan?	
				If yes-how? Describe in comments	If no - can it be a mitigation action? If yes, add Mitigation Action #.
					<ul style="list-style-type: none"> Land Development Ordinance, 'Chapter 17', adopted by the Board of Commissioners, 01-23-19. A comprehensive Ordinance regulating and limiting the uses of land and the uses and locations of buildings and structures; regulating and restricting the height and bulk of buildings and structures and determining the area of yards and other open spaces; regulating and restricting the density of population; dividing the City of Wildwood into districts for such purposes. This Chapter also includes establishing rules, regulations and standards governing the subdivision and development of land within the City; establishing a Planning Board and a Zoning Board of Adjustment; and prescribing penalties for the violation of its provisions. This Ordinance is divided into multiple Chapters and includes comprehensive sections regulating Flood Hazard Prevention, Stormwater, and Critical Areas.
Subdivisions	Yes	County & Local	Yes – if municipality has a Planning Board	Yes	-
Comment: <ul style="list-style-type: none"> P.L.1975, c.291 (C.40:55D-47): 40:55D-37. Grant of power; referral of proposed ordinance; county planning board approval a. The governing body may by ordinance require approval of subdivision plats by resolution of the planning board as a condition for the filing of such plats with the county recording officer and approval of site plans by resolution of the planning board as a condition for the issuance of a permit for any development, except that subdivision or individual lot applications for detached one or two dwelling-unit buildings shall be exempt from such site plan review and approval; provided that the resolution of the board of adjustment shall substitute for that of the planning board whenever the board of adjustment has jurisdiction over a subdivision or site plan pursuant to subsection 63b. of this act . Dictated by the Municipal Land Use Law. NJ Statute 40:27-6.2 - the board of freeholders of any county having a county planning board shall provide for the review of all subdivisions of land within the county by said county planning board and for the approval of those subdivisions affecting county road or drainage facilities as set forth and limited hereinafter in this section. Land Development Ordinance, Chapter 17, adopted by the Board of Commissioners, 01-23-19. Chapter 800, Development Application and Review includes the review and approval process for Subdivisions. Subdivisions are subject to the comprehensive development standards of the Land Development Ordinance. 					
Stormwater Management	Yes	State & Local	Yes	Yes	-
Comment: <ul style="list-style-type: none"> See Title 7 of the NJ Administrative Code, N.J.A.C. 7:8 Stormwater Management, Chapter 25, adopted by the Board of Commissioners. Flood control, groundwater recharge, and pollutant reduction through nonstructural or low impact techniques shall be explored before relying on structural BMPs. Structural BMPs should be integrated with nonstructural stormwater management strategies and proper maintenance plans. Nonstructural strategies include both environmentally sensitive site design and source controls that prevent pollutants from being placed on the site or from being exposed to stormwater. Source control plans should be developed based upon physical site conditions and the origin, nature, and the anticipated quantity or amount of potential pollutants. Multiple stormwater management BMPs may be necessary to achieve the established performance standards for water quality, quantity, and groundwater recharge. It is the purpose of this chapter to establish minimum stormwater management requirements and controls for "major development". This chapter shall be applicable to all site plans and subdivisions for the following major developments that require preliminary or final site plan or subdivision review, and Nonresidential major developments. 					
Post-Disaster Recovery	No	-	No	-	-
Comment:					
Real Estate Disclosure	Yes	State, Division of Consumer Affairs	Yes	Yes	-
Comment: <ul style="list-style-type: none"> N.J.A.C. 13:45A-29.1 - Before signing a contract of sale, all purchasers must receive a New Jersey Public Offering Statement (POS) approved by the New Jersey Real Estate Commission. The POS provides information such as estimated completion dates for improvements, fees for services and amenities, the type of title and ownership interest being offered, its proximity to hospitals, schools, fire and police, as well as any hazards, risks or nuisances in or around the subdivision. 					
Growth Management	Yes	Local	Yes	Yes	-
Comment: <ul style="list-style-type: none"> State Mandated on a municipal level. See Zoning Ordinance; Also - Plan Endorsement Process via the State Development & Redevelopment Plan provides for the delineation of Growth Areas and Environs; Use of the endorsed plans in the implementation of state environmental regulations makes the Plan Endorsement process a growth management strategy. City has an endorsed Centers Designation Plan through the State of New Jersey Office of Planning Advisory. 					





	Do you have this? (Yes/No)	Authority that enforces (Federal, State, Regional, County, Local)	Is this State Mandated?	Have aspects of this been integrated into your mitigation plan?	
				If yes-how? Describe in comments	If no - can it be a mitigation action? If yes, add Mitigation Action #.
Site Plan Review	Yes	County & Local	Yes – if municipality has a Planning Board	Yes	-
<p>Comment:</p> <ul style="list-style-type: none"> Dictated by the Municipal Land Use Law which sets forth minimum requirements for plans, etc., timeframes for development review. NJ Statute 40:27-6.2: The board of freeholders of any county having a county planning board shall provide for the review of all subdivisions of land within the county by said county planning board and for the approval of those subdivisions affecting county road or drainage facilities as set forth and limited hereinafter in this section. 40:27-6.10 In order that county planning boards shall have a complete file of the planning and zoning ordinances of all municipalities in the county, each municipal clerk shall file with the county planning board a copy of the planning and zoning ordinances of the municipality in effect on the effective date of this act and shall notify the county planning board of the introduction of any revision or amendment of such an ordinance which affects lands adjoining county roads or other county lands, or lands lying within 200 feet of a municipal boundary, or proposed facilities or public lands shown on the county master plan or official county map. Such notice shall be given to the county planning board at least 10 days prior to the public hearing thereon by personal delivery or by certified mail of a copy of the official notice of the public hearing together with a copy of the proposed ordinance. Land Development Ordinance, Chapter 17, adopted by the Board of Commissioners, 01-23-19. Chapter 800, Development Application and Review includes the review and approval process for Site Plans. Site Plans are subject to the comprehensive development standards of the Land Development Ordinance. 					
Environmental Protection	Yes	State	Yes	Yes	-
<p>Comment:</p> <ul style="list-style-type: none"> Coastal Areas Facilities Review Act (CAFRA) and the New Jersey Department of Environmental Protection (NJDEP) 					
Flood Damage Prevention	Yes	State & Local	Yes	Yes	-
<p>Comment:</p> <ul style="list-style-type: none"> The NJ State Law Flood Area Control Act (N.J.S.A. 58:16A-52) and the National Flood Control Act of 1968 (NFIP) are state and federal acts to support minimization of flood losses. They do not require local adoption but as enforced by the NJDEP, the floodplain ordinances of each municipality must be reviewed for compliance with these regulations. In addition, participation in the NFIP requires a floodplain ordinance. Regulations for the Flood Control Hazards Act were adopted in 2007 and amended effective June 20, 2016. Land Development Ordinance, 'Chapter 17', adopted by the Board of Commissioners, 01-23-19. This Ordinance is divided into multiple Chapters and includes comprehensive sections regulating Flood Hazard Prevention, Stormwater, and Critical Areas. Regulations for Coastal Flood Hazard Protection. Findings: <ul style="list-style-type: none"> The City of Wildwood occupies part of a low-lying barrier island which is exposed constantly to the threat of coastal flooding due to hurricanes, northeasters, and storms; The entire City of Wildwood has been designated by the Federal Emergency Management Agency as being exposed to a one percent (1%) or greater chance of being flooded in any given year. The oceanfront has been designated as being exposed to high velocity waves; The beaches and dunes of Wildwood are located entirely within these coastal flood hazard areas and, if properly maintained and protected, in accordance with this Section, provide some natural protection from the flooding that result from storm waves; and The predictable hazards of coastal flooding subject the residents, owners of businesses, and visitors of the City of Wildwood to potential loss of life, personal injury, and property damage, as well as disruption of commerce, resort activities, and governmental services, all of which adversely affect the public health, safety and welfare. Purpose: <ul style="list-style-type: none"> To promote and protect the public health, safety, and welfare To minimize the potential for loss of life, personal injury, and public and private property damage from coastal flooding To protect the beaches and dunes of Wildwood from inappropriate construction and indiscriminate trespass this reduces their effectiveness in limiting the risks of coastal flooding; To protect the public from the economic and social disruption caused by coastal flood damage; and To minimize the need for rescue relief efforts associated with coastal flooding and generally undertaken at the expense of the general public This Chapter required that new construction and substantial improvements of any residential or nonresidential structure shall have the lowest floor, including basement, elevated to or above the base flood elevation, plus two feet. 					
Wellhead Protection	No	-	No	-	-



	Do you have this? (Yes/No)	Authority that enforces (Federal, State, Regional, County, Local)	Is this State Mandated?	Have aspects of this been integrated into your mitigation plan?	
				If yes-how? Describe in comments	If no - can it be a mitigation action? If yes, add Mitigation Action #.
<i>Comment:</i>					
Emergency Management	Yes	Local, County, State, Federal	Yes	Yes	-
<i>Comment:</i>					
Climate Change	Yes	Local	No	No	Yes
<i>Comment:</i>					
<ul style="list-style-type: none"> The City of Wildwood Master Plan addresses climate change. Additionally, the City is in the process of developing a watershed master plan for the CRS program which will include a detailed analysis of NOAA predicted sea level rise for 2100. 					
Disaster Recovery Ordinance	No	-	No	-	-
<i>Comment:</i>					
Disaster Reconstruction Ordinance	No	-	No	-	-
<i>Comment:</i>					
Other	No	-	No	-	-
<i>Comment:</i>					
<ul style="list-style-type: none"> 					
Planning Documents					
Comprehensive / Master Plan	Yes, Updated in 2017	Local- P/Z Board	Yes	Yes	-
<i>Comment:</i>					
<ul style="list-style-type: none"> 2018 Revised NJ Statute 40:27-2; the county planning board shall make and adopt a master plan for the physical development of the county. The master plan of a county, with the accompanying maps, plats, charts, and descriptive and explanatory matter, shall show the county planning board's recommendations for the development of the territory covered by the plan, and may include, among other things, the general location, character, and extent of streets or roads, viaducts, bridges, waterway and waterfront developments, parkways, playgrounds, forests, reservations, parks, airports, and other public ways, grounds, places and spaces; the general location and extent of forests, agricultural areas, and open-development areas for purposes of conservation, food and water supply, sanitary and drainage facilities, or the protection of urban development, and such other features as may be important to the development of the county. The county planning board shall encourage the co-operation of the local municipalities within the county in any matters whatsoever which may concern the integrity of the county master plan and to advise the board of chosen freeholders with respect to the formulation of development programs and budgets for capital expenditures. Per State of NJ Municipal Land Use Law (MLUL) L. 1975, s. 2, eff Aug 1, 1976 40:55D-28 provides the required components of a municipal Master Plan and requires that each municipality prepare a master plan and update it every 6 years. Further, all zoning ordinances must be consistent with the Master Plan or will not be benefitted from a presumption of validity. The Open Space Plan is section 11 of the Master Plan. All of Wildwood's publicly owned beaches, which are areas of high natural hazard risk, are designated as open space, which in turn limits risks associated with development. 					
Capital Improvement Plan	Yes	Local	No	Yes	-
<i>Comment:</i>					
<ul style="list-style-type: none"> Capital Budget and Capital Improvement Program, 2020, approved by the Board of Commissioners. It includes current funding for projects such as, Boardwalk Repairs, Acquisition of Equipment, Building Repairs and Improvements, Road Reconstruction; and Back Bay Improvements. Projects included would be the Pacific Ave. drainage/stormwater project and the Leaming Ave. Pump Station/Outfall project. 					
Disaster Debris Management Plan	Yes (Draft)	State/Federal	No	No	2021-WILDWOOD-010
<i>Comment:</i>					
Floodplain or Watershed Plan	Yes (Draft)	Local	No	No	Yes
<i>Comment:</i>					
Stormwater Management Plan	Yes	State, Local	Yes	Yes	-



	Do you have this? (Yes/No)	Authority that enforces (Federal, State, Regional, County, Local)	Is this State Mandated?	Have aspects of this been integrated into your mitigation plan?	
				If yes-how? Describe in comments	If no - can it be a mitigation action? If yes, add Mitigation Action #.
<p>Comment:</p> <ul style="list-style-type: none"> The Stormwater Management rules (N.J.A.C. 7:8) rules were published in the February 2, 2004 NJ Register. These rules set forth the required components of regional and municipal stormwater management plans and establish the stormwater management design and performance standards for new (proposed) development. The design and performance standards for new development include groundwater recharge, runoff quantity controls, and runoff quality controls. The rules emphasize, as a primary consideration, the use of nonstructural stormwater management techniques including minimizing disturbance, minimizing impervious surfaces, minimizing the use of stormwater pipes, preserving natural drainage features, etc. The rules also set forth requirements for groundwater recharge, stormwater runoff quantity control, stormwater runoff quality control, and the prohibition of major development to be located within or to discharge runoff from the major development into a 300-foot riparian zone without prior authorization from the Department under the Flood Hazard Area Control Act Rules, N.J.A.C. 7:13. 					
Stormwater Pollution Prevention Plan	Yes	State, Local	Yes	Yes	-
<p>Comment:</p> <ul style="list-style-type: none"> The Phase II New Jersey Pollutant Discharge Elimination System Stormwater Regulation Program (NJPDES) rules (N.J.A.C. 7:14A) were published in the February 2, 2004, NJ Register. These NJPDES rules are intended to address and reduce pollutants associated with existing stormwater runoff. The NJPDES rules establish a regulatory program for existing stormwater discharges as required under the Federal Clean Water Act. These NJPDES rules govern the issuance of permits to entities that own or operate small municipal separate storm sewer systems, known as MS4s. Under this program, permits must be secured by municipalities, certain public complexes such as universities and hospitals, and State, interstate and federal agencies that operate or maintain highways. The permit program establishes the Statewide Basic Requirements that must be implemented to reduce nonpoint source pollutant loads from these sources. The Statewide Basic Requirements include measures such as: the adoption of ordinances (litter control, pet waste, wildlife feeding, proper waste disposal, etc.); the development of a municipal stormwater management plan and implementing ordinance(s); requiring certain maintenance activities (such as street sweeping and catch basin cleaning); implementing solids and floatables control; locating discharge points and stenciling catch basins; and a public education component. 					
Urban Water Management Plan	No	-	No	-	-
Comment:					
Habitat Conservation Plan	No	-	No	-	-
Comment:					
Economic Development Plan	Yes	State & Local	No	Yes	Yes
<p>Comment:</p> <ul style="list-style-type: none"> The Economic Development Plan is section 13 of the Master Plan. Beachfront Redevelopment Project, January 2019, Request for Qualifications And Proposals. The City of Wildwood, New Jersey (the "City") invited qualified developers or development teams (collectively, "Respondents") to respond to this Request for Qualification and Proposals ("RFQ/RFP") with conceptual development proposals and statements of their qualifications to develop a project on the "Beachfront Parking Lots." Back Bay Development Area Pacific Ave. Redevelopment Project in conjunction with the County of Cape May 					
Shoreline Management Plan	Yes	State	Yes – if located in a coastal zone	No	No
<p>Comment:</p> <ul style="list-style-type: none"> NJ Coastal Area Facility Review Act (N.J.S.A. 13:19) or CAFRA regulates almost all development along the coast for activities including construction, relocation, and enlargement of buildings or structures, and excavation, grading, shore protection structures, and site preparation. This law is implemented through NJ's Coastal Zone management Rules N.J.A.C. 7:7E-1 et seq. 					
Community Wildfire Protection Plan	No	-	No	-	-
Comment:					
Community Forest Management Plan	No	-	No	-	-
Comment:					
Transportation Plan	Yes	Local	No	Yes	-
Comment:					





	Do you have this? (Yes/No)	Authority that enforces (Federal, State, Regional, County, Local)	Is this State Mandated?	Have aspects of this been integrated into your mitigation plan?	
				If yes-how? Describe in comments	If no - can it be a mitigation action? If yes, add Mitigation Action #.
<ul style="list-style-type: none"> The City's Master Plan and Master Plan Reexamination includes a Circulation Element. The Element addresses various means of transportation, resiliency, and emergency evacuation plans and capabilities. 					
Agriculture Plan	No	-	No	-	-
<i>Comment:</i>					
Climate Action Plan	No	-	No	-	-
<i>Comment:</i>					
Tourism Plan	No	-	No	-	-
<i>Comment:</i>					
Business Development Plan	No	-	No	-	-
<i>Comment:</i>					
Other	No	-	No	-	-
<i>Comment:</i>					
<ul style="list-style-type: none"> 					
Response/Recovery Planning					
Comprehensive Emergency Management Plan (CEMP) / Emergency Operations Plan (EOP)	Yes	Federal/State/Local	Yes	Yes	-
<i>Comment:</i> <ul style="list-style-type: none"> Each county and municipality in the State shall prepare a written Emergency Operations Plan with all appropriate annexes necessary to implement the plan. Each Emergency Operations Plan shall be adopted no later than one year after the State Emergency Planning Guidelines have been adopted by the State Office of Emergency Management and shall be evaluated at such subsequent scheduled review of the State Emergency Operations Plan. L.1989, c.222, s.19. City of Wildwood Emergency Operations Plan, Updated 2016 					
Threat & Hazard Identification & Risk Assessment (THIRA)	No	-	No	-	-
<i>Comment:</i> <ul style="list-style-type: none"> The City's Office of Emergency Management is planning on conducting a THIRA of certain critical facilities. 					
Post-Disaster Recovery Plan	No	-	No	-	-
<i>Comment:</i>					
Continuity of Operations Plan	Yes	Local	No	Yes	-
<i>Comment:</i> <ul style="list-style-type: none"> City of Wildwood Emergency Operations Plan. Adopted 2008, Revised 2016 & 2020 					
Public Health Plan	No	-	No	-	-
<i>Comment:</i>					
Other	No	-	No	-	-
<i>Comment:</i>					

Table 9.15-4. Development and Permitting Capability

Criterion	Response
Does your jurisdiction issue development permits? - If no, who does? If yes, which department?	Yes, Construction and Zoning Departments
Does your jurisdiction have the ability to track permits by hazard area?	Yes





Criterion	Response
Does your jurisdiction have a buildable lands inventory? -If yes, please describe briefly. -If no, please quantitatively describe the level of buildout in the jurisdiction.	Yes. The Tax Assessor has a list of buildable lots however it should be noted that Wildwood is nearly built out.

ADMINISTRATIVE AND TECHNICAL CAPABILITY

The table below summarizes potential staff and personnel resources available to the City of Wildwood.

Table 9.15-5. Administrative and Technical Capabilities

Staff/Personnel Resource	Available?	Department/Agency/Position
Administrative Capability		
Planning Board	Yes	Planning & Zoning
Mitigation Planning Committee	No	-
Environmental Board / Commission	No	-
Open Space Board / Committee	Yes	Zoning
Economic Development Commission / Committee	Yes	Revenue and Finance & Redevelopment
Warning Systems / Services (reverse 911, outdoor warning signals)	Yes	Office of Emergency Management
Maintenance program to reduce risk	Yes	Sewer Department & Public Works
Mutual aid agreements	Yes	Fire/EMS/Police. The Municipal Emergency Manager, with support from County OEM and New Jersey OEM, develop and implement MOU's with neighboring jurisdictions for resources during emergencies.
Technical/Staffing Capability		
Planners or engineers with knowledge of land development and land management practices	Yes	Contracted: Consulting Municipal Engineers (CME)
Engineers or professionals trained in building or infrastructure construction practices	Yes	Contracted: Consulting Municipal Engineers (CME)
Planners or engineers with an understanding of natural hazards	Yes	Contracted: Consulting Municipal Engineers (CME)
Staff with training in benefit/cost analysis	Yes	Contracted: Consulting Municipal Engineers (CME), Triad Associates and Rutella Associates
Staff with training in green infrastructure	Yes	Contracted: Consulting Municipal Engineers (CME)
Staff with education/knowledge/training in low impact development	Yes	Contracted: Consulting Municipal Engineers (CME)
Surveyor	Yes	Contracted: Consulting Municipal Engineers (CME)
Stormwater engineer	Yes	Water Dept. Superintendent Mike McIntyre and CME Engineers
Personnel skilled or trained in GIS applications	Yes	Contracted: Consulting Municipal Engineers (CME)
Local or state water quality professional	Yes	Water and Sewer Dept.
Scientist familiar with natural hazards in local area	No	-
Emergency manager	Yes	Daniel Dunn, City of Wildwood Emergency Management Coordinator
Watershed planner	Yes	Contracted: Consulting Municipal Engineers (CME)
Environmental specialist	No	-
Grant writers	Yes	Contracted: Triad Associates and Rutella Associates
Resilience Officer	No	-



Staff/Personnel Resource	Available?	Department/Agency/Position
Other	No	-

FISCAL CAPABILITY

The table below summarizes financial resources available to the City of Wildwood.

Table 9.15-6. Fiscal Capabilities

Financial Resource	Accessible or Eligible to Use?
Community Development Block Grants (CDBG, CDBG-DR)	Yes
Capital Improvements Project Funding	Yes—Revenue & Finance
Authority to Levy Taxes for Specific Purposes	Yes
User Fees for Water, Sewer, Gas or Electric Service	Yes—Water & Sewer
Incur Debt through General Obligation Bonds	Yes
Incur Debt through Special Tax Bonds	No
Incur Debt through Private Activity Bonds	No
Withhold Public Expenditures in Hazard-Prone Areas	No
State-Sponsored Grant Programs	No
Development Impact Fees for Homebuyers or Developers	No
Clean Water Act 319 Grants (Nonpoint Source Pollution)	No
Other	No

EDUCATION AND OUTREACH CAPABILITY

The table below summarizes the education and outreach resources available to the City of Wildwood.

Table 9.15-7. Education and Outreach Capabilities

Criterion	Response
Do you have a public information officer or communications office?	Yes, Lisa Fagan
Do you have personnel skilled or trained in website development?	Yes, Russ Simmons
Do you have hazard mitigation information available on your website? -If yes, briefly describe.	Yes, information related to the City’s HMP
Do you use social media for hazard mitigation education and outreach? -If yes, briefly describe.	Yes, on the City’s social media pages including Facebook, Instagram, and Twitter.
Do you have any citizen boards or commissions that address issues related to hazard mitigation? -If yes, briefly describe.	No
Do you have any other programs already in place that could be used to communicate hazard-related information? If yes, briefly describe.	Wildwood has a varied outreach program. An informational letter explaining the city’s flood risk, encouraging people to protect themselves through flood insurance, and offering numerous city-provided flood services is sent annually to all residents. Flood protection information and informational pamphlets on a number of protection, mitigation, and insurance topics are also available. There are also occasional presentations and events on different topics, including emergency preparedness, natural floodplain functions, and resiliency. A dedicated Program for Public Information (PPI) for Wildwood would help promote the effectiveness of current outreach efforts and involve more stakeholders in those efforts.

COMMUNITY CLASSIFICATIONS

The table below summarizes the classifications for community programs available to the City of Wildwood.





Table 9.15-8. Community Classifications

Program	Participating?	Classification	Date Classified
Community Rating System	Yes	Class 5	5/15/2017
Building Code Effectiveness Grading Schedule (BCEGS)	Yes	3/3	2017
Public Protection (Fire ISO Protection Class)	Yes	Class 3	7/1/2015
Storm Ready Certification	Yes	Participating	September 2009
Firewise Community Classification	No	-	-
Sustainable Jersey	NP	-	-

ADAPTIVE CAPACITY

Adaptive capacity is defined as “the ability of systems, institutions, humans and other organisms to adjust to potential damage, to take advantage of opportunities, or respond to consequences” (IPCC 2014). In other words, it describes a jurisdiction’s current ability to adjust to, protect from, or withstand a hazard event. This term is often discussed in reference to climate change; however, adaptive capacity also includes an understanding of local capacity for adapting to current and future risks and changing conditions. The table below summarizes the adaptive capacity for each hazard and the jurisdiction’s rating.

Table 9.15-9. Adaptive Capacity

Hazard	Adaptive Capacity (Capabilities) - Strong/Moderate/Weak
Climate Change and Sea Level Rise	Moderate
Coastal Erosion	Moderate
Disease Outbreak (new)	Moderate
Drought (new)	Moderate
Flood	Moderate
Hurricane	Moderate
Nor’Easter	Moderate
Severe Weather	Moderate
Severe Winter Weather	Strong
Tsunami	Moderate
Wildfire	Moderate

Notes:
Strong = Capacity exists and is in use; Moderate = Capacity may exist, but is not used or could use some improvement;
Weak = Capacity does not exist or could use substantial improvement; Unsure = Not enough information is known to assign a rating.

The Watershed Management Plan has extensive modeling to determine the possible impacts of climate change upon the municipality. The administration is supportive of the development of plans that address this issue. Several projects completed related to climate change include raising roadways, increasing freeboard, and raising bulkheads.

NATIONAL FLOOD INSURANCE PROGRAM

This section provides specific information on the management and regulation of the regulatory floodplain.

Table 9.15-10. National Flood Insurance Program Compliance

Criterion	Response
What local department is responsible for floodplain management?	Zoning Official and Construction Official
Who is your floodplain administrator? (name, department/position)	Steven Booy, CFM—Zoning Official
Are any certified floodplain managers on staff in your jurisdiction?	Yes, see above



Criterion	Response
What is the date that your flood damage prevention ordinance was last amended?	July 12, 2017, Ordinance #1087-17
Does your floodplain management program meet or exceed minimum requirements? -If exceeds, in what ways?	Yes, it exceeds the minimum requirements including increased regulatory standards.
When was the most recent Community Assistance Visit or Community Assistance Contact?	Wildwood's most recent Community Assistance Visit was January 21st, 2015.
Does your jurisdiction have any outstanding NFIP compliance violations that need to be addressed? -If so, state what they are.	No
Are any RiskMAP projects currently underway in your jurisdiction? If so, state what they are.	No
Do your flood hazard maps adequately address the flood risk within your jurisdiction? -If no, state why.	Yes
Does your floodplain management staff need any assistance or training to support its floodplain management program? - If so, what type of assistance/training is needed?	No
Does your jurisdiction participate in the Community Rating System (CRS)? -If yes, is your jurisdiction interested in improving its CRS Classification? -If no, is your jurisdiction interested in joining the CRS program?	Yes, and the City is interested in improving our CRS Classification.
How many flood insurance policies are in force in your jurisdiction? * -What is the insurance in force? -What is the premium in force?	1,603 policies
How many total loss claims have been filed in your jurisdiction? * -How many claims are still open or were closed without payment? -What were the total payments for losses?	2,111 claims \$608,827 in payments
Do you maintain a list of properties that have been damaged by flooding?	Yes
Do you maintain a list of property owners interested in flood mitigation?	Yes

*According to FEMA statistics as of October 2020

ADDITIONAL AREAS OF EXISTING INTEGRATION

- Land Use Planning:** Consulting Municipal Engineers (CME) is Wildwood's contracted planner. Natural hazard risk reduction is considered as part of all regulatory and long-term planning. Wildwood has a Planning Board and Zoning Board of Adjustment. Those boards are responsible for administering the site plan, subdivision, and variance requirements of the Land Use and Development Ordinance. Stormwater management, soil & erosion control, and Environmental Impact Assessments are all reviewed as part of land use decision making. The Planning Board contributed to the development of the Master Plan and Land Use and Development Ordinance and is responsible for determining that future plans are in compliance with the approved Master Plan.
- Stormwater Management:** Wildwood is an MS4 Regulated Community. The Wildwood Sewer Utility is responsible for maintenance and management of the stormwater sewer system. The Planning Board and Zoning Board of Adjustment perform reviews of stormwater impact from new development. The Stormwater Control Ordinance is Ordinance 666-06. The Stormwater Control Ordinance sets controls for post-construction peak runoff on "major development" to prevent overloading the existing stormwater drainage system.
- Open Space:** The Open Space Plan is section 11 of the Master Plan. All of Wildwood's publicly owned beaches, which are areas of high natural hazard risk, are designated as open space, which in turn limits risks associated with development.
- Technical Resources:** The City has contractor support for benefit cost analysis and grant application development. The Zoning Official is a Certified Floodplain Manager and receives continuing education





as part of that certification; however, staff would benefit from additional information on pre-disaster grant funding sources for mitigation projects.

- **Other Programs:** Regular maintenance of outfall lines on beach is required due to accretion of beach.
- **Administration:** The Floodplain Administrator, Construction Official, and City Engineers all have job descriptions that specifically include identifying and/or implementing efforts to reduce natural hazard risk. Staff participate in associations and organizations that support natural hazard risk reduction capabilities including the New Jersey Association for Floodplain Management, the Association of State Floodplain Managers, Building Officials and Code Administrators, and the South Jersey Electrical Inspectors Association.
- **Freeboard:** The City continues to enforce that all new construction, buildings substantially damaged, or substantially improved be elevated at least 2 feet above the Base Flood Elevation through Wildwood’s Flood Damage Prevention Ordinance and construction ordinances.

9.15.5 Hazard Event History Specific to the Jurisdiction

Cape May County has a history of hazard events, as detailed in Section 5 (Risk Assessment) of this plan. A summary of historical events is provided in each of the hazard profiles in Section 5.4 (Hazard Profiles) and includes a chronology of events that affected Cape May County and its jurisdictions. The City of Wildwood’s history of federally-declared (as presented by FEMA) and significant hazard events (as presented in NOAA-NCEI) is consistent with that of Cape May County. Table 9.15-11 provides details regarding municipal-specific loss and damages the City experienced during hazard events. Information provided in the table below is based on reference material or local sources.

Table 9.15-11. Hazard Event History

Date(s) of Event	Event Type (disaster declaration if applicable)	Cape May County Designated?	Summary of Event	Summary of Local Damages and Losses
January 23, 2016	Winter Storm Jonas	DR-4264	Coastal storm with major coastal flooding and high winds.	Flood damage to various public and private properties.
July 10, 2020	Tropical Storm Fay	No	Tropical Storm with moderate flooding and high winds.	Flooding of many City streets with damage to private property.
January 20, 2020-continuing	Covid-19 Pandemic	DR-4488, EM-3451	The coronavirus pandemic resulted in hospitalizations, death.	The City was impacted by required business and school closures and mask/social distancing requirements.
August 4, 2020	Tropical Storm Isias	Pending	Tropical Storm with high winds.	Wind damage to both public and private property. Force account labor and debris removal costs.

Source: NOAA NCEI 2020, FEMA 2020

9.15.6 Jurisdiction-Specific Vulnerabilities and Hazard Ranking

The hazard profiles in Section 5 (Risk Assessment) provide detailed information regarding each plan participant’s vulnerability to the identified hazards. A gradient of certainty was developed to summarize the confidence level regarding the input used to populate the hazard ranking. Refer to Section 5.1 (Methodology) and Section 5.3 (Hazard Ranking) for a detailed summary for the City of Wildwood risk assessment results and data used to determine the hazard ranking.

REPETITIVE FLOOD LOSSES





The table below summarizes the repetitive and severe repetitive flood losses in the City of Wildwood. (2018 Data)

- Number of repetitive loss (RL) properties: 23
- Number of severe repetitive loss (SRL) properties: 4
- Number of RL/SRL properties that have been mitigated: 4

Source: NFIP FEMA Region 2, 2020

Note: The number of SRL properties excludes RL properties.

CRITICAL FACILITIES

The table below identifies critical facilities in the community located in the 1-percent and 0.2-percent floodplain.

Table 9.15-12. Potential Flood Losses to Critical Facilities and Lifelines

Name	Type	Exposure	
		1% Event	0.2% Event
WILDWOOD VOLUNTEER FIRE COMPANY #1	Fire Stations	X	X
WILDWOOD CITY FIRE COMPANY	Fire Stations	X	X
WILDWOOD - HOLLY BEACH	Fire Stations	X	X
Mocean Marina	Marinas	X	X
Lions Center	Senior Facility	X	X
WILDWOOD HIGH SCHOOL	Education	X	X
Spicer Ave Pump Station	Wastewater Treatment Facilities	X	X
WILDWOOD COAL GAS SITE	Superfund Sites	X	X
MOREY'S	Superfund Sites	X	X
Wildwood Police Department	Police Stations	X	X
WILDWOOD CONVENTION CENTER	Polling Places	X	X
Wildwood	Municipal Facilities	X	X
Morey's Pier's- Surfside Pier	Recreation	X	X
GLENWOOD AVE ELEMENTARY SCHOOL	Education	X	X
Wildwood Boardwalk	Recreation	X	X
Glenwood Elementary School	Education	X	X
Acme Food Market	Grocery/Food Processing	X	X
Atlantic City Electric Substation	Electric Facilities	X	X
Byrne Community Center	Shelters	X	X
Cape Regional Urgent Care	Health Services	X	X
Complete Care	Health Services	X	X
CVS Pharmacy	Health Services	X	X
Garfield Ave. Water Tower	Potable Water Facilities	X	X
George Redding Bridge	Bridge	X	X
Leaming Ave. Pumping Station	Wastewater Treatment Facilities	X	X
Pine Ave. Water Tower	Potable Water Facilities	X	X
Riggins Gas Station	Natural Gas Facility	X	X
Rio Grande Ave. Pumping Station	Wastewater Treatment Facilities	X	X
Rite Aid Pharmacy	Health Services	X	X
Sandman Towers	Health Services	X	X
Schooner Island Marina	Marinas	X	X
Wawa Gas Station	Natural Gas Facility	X	X
Wildwood Catholic Academy Early Education Center	Education	X	X
Wildwood City Bus Terminal	Bus Station	X	X
Wildwood Public Works	DPW	X	X
Wildwood Public Works Garages	DPW	X	X





Name	Type	Exposure	
		1% Event	0.2% Event
Wildwood Water Utility	Potable Water Facilities	X	X

Source: FEMA DFIRM 2014/2017; Cape May County 2020

Note:

*Identified lifeline

IDENTIFIED ISSUES

The jurisdiction has identified the following vulnerabilities within their community:

- The City of Wildwood, in its entirety is located in the 1-Percent Annual Chance Flood Zone. That being the case, all properties are susceptible to flooding. Private property owners whose homes are located below the Base Flood Elevation are particularly at risk for flood damage.
- The majority of repetitive loss properties identified by FEMA are located on the west side of the city, which borders the bay side of the island. That area of the city, particularly the northern end, is more susceptible to tidal flooding during major coastal storms and northeasters. The western section of the island is bulkheaded, and the City’s stormwater outfall lines drain into the bay. In the event of an extremely high tide water will rise to the point that it fully submerges the outfall lines leading to the bay and will begin to flow back through the stormwater drainage system. If the flooding is severe enough, water will eventually rise above the bulkheads.
- Aside from the facilities noted in the table above, Wildwood’s Public Works facility is also located in the Special Flood Hazard Area, on the west side of the city. During flood events that facility can be hard to reach, causing difficulty to emergency personnel. Vehicles usually located at that facility must be moved to higher ground during severe flood events. That facility also lacks backup power. The City recently elevated the Public Works yard and facility and is planning to add a building that is above BFE.
- The road leading into Wildwood near the George Redding Bridge, Rio Grande Avenue, is a particularly low area. During severe flooding events that road and the George Redding Bridge are barricaded and closed by emergency personnel to protect life and property. The only access to the City of Wildwood during those events is from either Rt. 147/Spruce Avenue leading into North Wildwood (which is also susceptible to flooding) or from County Road 621/Ocean Drive through Wildwood Crest. Limited access to and from Wildwood during these times puts a greater strain on emergency services and complicates emergency evacuations when they are required.
- The Pacific Avenue commercial section of Wildwood also regularly experiences flooding. Years of accretion on the beach has lengthened the beach to the point where the outfall lines from the city’s storm sewer system no longer reach the ocean. As a result, the end of the lines become blocked with sand. The storm sewer system then backs up and stormwater on Pacific Avenue doesn’t adequately drain. Wildwood Public Works/Sewer Utility has a regular schedule for digging out the outfall lines, but the problem is ongoing.

HAZARD AREA EXTENT AND LOCATION

Hazard area extent and location maps were generated for the City of Wildwood that illustrate the probable areas impacted within the municipality. These maps are based on the best available data at the time of the preparation of this plan and are adequate for planning purposes. Maps have been generated only for those hazards that can be clearly identified using mapping techniques and technologies and for which the City of Wildwood has significant exposure. A map of the City of Wildwood hazard area extent and location is provided on the following page. This map indicates the location of the regulatory floodplain, as well as identified critical facilities within the municipality.

HAZARD RANKING





This section includes the community specific identification of the primary hazard concerns based on identified problems, impacts and the results of the risk assessment as presented in Section 5 (Risk Assessment). The ranking process involves an assessment of the likelihood of occurrence for each hazard; its potential impacts on people, property, and the economy; community capability and changing future climate conditions. This input supports the mitigation action development to target those hazards with highest level of concern.

As discussed in Section 5.3 (Hazard Ranking), each plan participant may have differing degrees of risk exposure and vulnerability compared to Cape May County as a whole. Therefore, each jurisdiction ranked the degree of risk to each hazard as it pertains to their community factoring in their capabilities to withstand impacts and rebound after the event. The table below summarizes the hazard rankings of potential natural hazards for the City of Wildwood. The City of Wildwood has reviewed the Cape May County hazard ranking table and has provided input to its individual results to reflect the relative risk of the hazards of concern to the community.

During the review of the hazard ranking, the City indicated the following:

- The City agreed with the calculated hazard rankings.

Table 9.15-13. City of Wildwood Hazard Ranking Input

Climate Change and Sea Level Rise	Coastal Erosion	Disease Outbreak (new)	Drought (new)	Flood	Hurricane
High	Medium	Medium	Medium	High	High

Nor'Easter	Severe Weather	Severe Winter Weather	Tsunami	Wildfire
High	High	High	Medium	Low

9.15.7 Mitigation Strategy and Prioritization

This section discusses past mitigations actions and status, describes proposed hazard mitigation initiatives, and provides action prioritization.

PAST MITIGATION INITIATIVE STATUS

The following table summarizes the jurisdiction’s progress on their mitigation strategy identified in the 2015 HMP. Actions that are carried forward as part of this plan update are included in the following subsection in its own table with prioritization. Previous actions that are now on-going programs and capabilities are indicated as such in the following table and can also be found under ‘Capability Assessment’ presented previously in this annex.

Table 9.15-14. Status of Previous HMP Mitigation Actions

2015 Action Number	Action Description	Responsible Party	Status (In Progress, No Progress, Ongoing Capability, or Completed)	Include in the 2021 HMP Update? Check if Yes	Enter 2021 HMP Action #
CW-1a	Property Mitigation Support – Retrofit: Where appropriate, support retrofitting (e.g. elevation) of structures located in hazard-prone areas to protect structures from future damage, with repetitive loss and severe repetitive loss properties as priority.	City (likely through NFIP Floodplain Administrator)	In Progress	Yes	2021-WILDWOOD-001



2015 Action Number	Action Description	Responsible Party	Status (In Progress, No Progress, Ongoing Capability, or Completed)	Include in the 2021 HMP Update?	
				Check if Yes	Enter 2021 HMP Action #
CW-1b	Property Mitigation Support – Acquisition/Relocation: Where appropriate, support acquisition and/or relocation of structures located in hazard-prone areas to protect structures from future damage, with repetitive loss and severe repetitive loss properties as priority.	City (likely through NFIP Floodplain Administrator)	In Progress	Yes	2021-WILDWOOD-001
CW-2	Continue to develop and improve existing floodplain management program so as to attain a higher CRS rating.	City	In Progress	Yes	2021-WILDWOOD-009
CW-3	Continue to support the implementation, monitoring, maintenance, and updating of this plan, as defined in Section 7.0	City (through mitigation planning point of contacts)	Ongoing Capability	No	
CW-4	Strive to maintain compliance with, and good-standing in the National Flood Insurance program.	Municipality (likely through NFIP Floodplain Administrator)	Ongoing Capability	No	
CW-5	Complete conversion of Emergency Operations Plan into ESF format.	Municipal Emergency Manager with support from County OEM and NJ OEM	Completed 2016	No	
CW-6	Develop and implement MOU's with neighboring jurisdictions for resources during emergencies.	Municipal Emergency Manager with support from County OEM and NJ OEM	Ongoing Capability	No	
CW-7	Continue to enhance automatic aid agreements with neighboring jurisdictions.	City	Ongoing Capability	No	
CW-8	Support County-wide initiatives identified in Section 9.1 of the County Annex.	Local departments (as applicable for specific initiative)	Ongoing Capability	No	
CW-9	Replace remaining old bulkheads at street-ends (west side of the City).	City	Completed	No	
CW-10	Two Foot Freeboard: Continue to enforce that all new construction, buildings substantially damaged, or substantially improved be elevated at least 2 feet above the Base Flood Elevation through Wildwood's Flood Damage Prevention Ordinance and construction ordinances.	City	Ongoing Capability	No	



2015 Action Number	Action Description	Responsible Party	Status (In Progress, No Progress, Ongoing Capability, or Completed)	Include in the 2021 HMP Update?	
				Check if Yes	Enter 2021 HMP Action #
CW-11	Elevate Route 47 from George Redding Bridge to Susquehanna Ave to mitigate flooding	State DOT	Completed	No	
CW-12	Continue regular replacement and maintenance of Tideflex check valves on all outfall lines on bayside of island.	City	Completed	No	
CW-13	Repair and/or replace the existing bulkhead / revetments on Grassy Sound Channel between the Beach Creek Restaurant and under the Boathouse Restaurant. Currently there is no bulkhead under the Boathouse Restaurant. Tidewaters crest the existing revetment and contribute to flooding at the intersection of Rio Grande Ave. – Susquehanna Ave.	City Engineering	No Progress	Yes	2021-WILDWOOD-003
CW-14	Replace the existing storm drainage system out-letting through Outfall #2, including Old Rio Grande Avenue to mitigate flooding at the Rio Grande Avenue – Susquehanna Avenue intersection. This new construction may include a watertight penetration of the bulkhead, new tide flex valve, new 18-inch diameter HDPE/DIP, new catch basins and manholes from the existing bulkhead to the most upstream manhole at Old Rio Grande Avenue (to the north).	City Engineering	No Progress	Yes	2021-WILDWOOD-002
CW-15	Continue replacement of existing catch basin curb boxes with J-ECO curb boxes throughout city.	City Engineering	Completed	No	
CW-16	Explore the benefit of installing additional storm water pump stations at certain locations that experience severe flooding.	City Engineering	Ongoing Capability	Yes	2021-WILDWOOD-012
CW-17	Relocate conflicting utilities at the intersection of Susquehanna Ave and Burk Ave install a new lateral connecting the catch basins with a positively sloped pipe, eliminating the loss of head.	City Engineering	No Progress	Yes	
CW-18	Replace catch basins and laterals, and install outfall pipe with 18-inch Tideflex valve at Mediterranean	City Engineering	No Progress	Yes	2021-WILDWOOD-014



2015 Action Number	Action Description	Responsible Party	Status (In Progress, No Progress, Ongoing Capability, or Completed)	Include in the 2021 HMP Update?	
				Check if Yes	Enter 2021 HMP Action #
	Avenue – W. Taylor Avenue intersection Outfall #4 to mitigate flooding. Outfall #4 has an invert below the ground level thus impeding the outlet of storm runoff.				
CW-19	Repair, restructure and reinforce the existing revetment on north side of Mediterranean Avenue at W. Taylor Avenue to mitigate flooding.	City Engineering	No Progress	Yes	2021-WILDWOOD-013
CW-20	From the July 2003 Storm Sewer Outfall Redesign: Re-engineer the existing outfall system to eliminate the existing ineffective (below-grade) functionally obsolete outfalls to mitigate flooding, health and safety hazards, beach closings and losses to the local economy. One proposed solution is to consolidate the storm water collection system into a detention basin which will then pump the storm water system through a single outfall line extending into the ocean.	City	In Progress	Yes	2021-WILDWOOD-012
CW-21	Repair, restructure and reinforce the earthen berm where there is a breach at the W. Taylor Ave intersection.	City Engineering	No Progress	Yes	2021-WILDWOOD-013
CW-22	Replace the existing, deteriorated bulkhead at Block 249.01, Lot 1 which is severely deteriorated and compromised. These repairs must conform with the current Bulkhead Ordinance.	City Engineering	Completed	No	
CW-23	Explore the concept of “Sheltering In-Place” in vertical development as a viable option to traditional evacuation.	City	Completed, not likely to use as a viable option for evacuation	No	
CW-24	Explore the viability of constructing bulkheads at the street-ends of Oak and Wildwood Avenues to replace the rip-rap armored banks.	Engineering	Completed	No	
CW-25	Explore and possibly establish a Program for Public Information (PPI) with neighboring municipalities to enhance floodplain management outreach efforts	Emergency Management; support from New Jersey Coastal Coalition	In Progress	Yes	



2015 Action Number	Action Description	Responsible Party	Status (In Progress, No Progress, Ongoing Capability, or Completed)	Include in the 2021 HMP Update?	
				Check if Yes	Enter 2021 HMP Action #
CW-26	Wildwood’s Public Works facility Mitigation: Install backup power and investigate/identify and implement appropriate and cost-effective mitigation action(s) to address facility accessibility issues during flood events. Wildwood’s Public Works facility is located in the Special Flood Hazard Area, on the west side of the city. During flood events that facility can be hard to reach, causing difficulty to emergency personnel. Vehicles usually located at that facility must be moved to higher ground during severe flood events. That facility also lacks backup power.	Public Works, Administration	In Progress; The City has raised the grade level of Wildwood Public Works Yard above BFE. A new building needs to be constructed at the yard to replace a flood damaged building at another site.	Yes	2021-WILDWOOD-001
CW-27	Pacific Avenue Mitigation: Investigate/identify and implement appropriate and cost-effective mitigation action(s) to address localized flooding along the commercial section of Pacific Avenue in Wildwood.	Public Works, Administration	In Progress	Yes	2021-WILDWOOD-002

In addition to the above progress, the City of Wildwood identified the following mitigation projects/activities that were completed but not identified in the 2015 HMP mitigation strategy:

- Repaired the roadway in the 400 E. block of Magnolia Ave. to prevent ongoing flooding issues.
- Boardwalk ramp reconstruction at several streets.
- Constructed a new Water Department facility at Schellenger and Park Blvd. that is above BFE, replacing former facility at Pine and New Jersey Ave. that was below BFE and flooded previously.
- The Rio Grande Ave. Gateway Project is almost complete. This resulted in Rio Grande Ave. being raised as well as the installation of a flood pump at Rio Grande and Susquehanna Ave. Hopefully, this alleviates some of the repetitive flooding issues of Rio Grande Ave. and the closing of the George Redding Bridge.

PROPOSED HAZARD MITIGATION INITIATIVES FOR THE PLAN UPDATE

The City of Wildwood participated in a risk assessment workshop in September 2020 in which detailed information was provided about assets exposed and vulnerable to the identified hazards of concern. The City of Wildwood participated in a mitigation action workshop in October 2020 and was provided a Mitigation Toolbox that included a mitigation catalog developed specifically for Cape May County and its hazards of concerns; challenges and opportunities identified during the capability and risk assessments; and the following FEMA publications to use as a resource as part of their comprehensive review of all possible activities and mitigation measures to address their hazards: FEMA 551 *Selecting Appropriate Mitigation Measures for Floodprone Structures* (March 2007) and FEMA *Mitigation Ideas – A Resource for Reducing Risk to Natural Hazards*





(January 2013). Section 6 (Mitigation Strategy) and Appendix F (Mitigation Strategy Supplement) provide a more complete description of the Mitigation Toolbox and its resources.

Table 9.15-15 summarizes the comprehensive-range of specific mitigation initiatives the City of Wildwood would like to pursue in the future to reduce the effects of hazards. Some of these initiatives might be previous actions carried forward for this HMP update. Initiatives are dependent upon available funding (grants and local match availability) and can be modified or omitted at any time based on the occurrence of new hazard events and changes in municipal priorities. Both the 4 FEMA mitigation action categories and the 6 CRS mitigation action categories are listed in the table below to further demonstrate the wide-range of activities and mitigation measures selected.

As discussed in Section 6 (Mitigation Strategy), 14 evaluation/prioritization criteria are used to complete the prioritization of mitigation initiatives. For each new mitigation action, a numeric rank is assigned (-1, 0, or 1) for each of the 14 evaluation criteria to assist with prioritizing actions as *High*, *Medium*, or *Low*. The table below summarizes the evaluation of each mitigation initiative, listed by action number.

Table 9.15-16 provides a summary of the prioritization of all proposed mitigation initiatives for this HMP update.



Table 9.15-15. Proposed Hazard Mitigation Initiatives

Initiative Number	Mitigation Initiative Name	Description of the Problem and Solution	New or Existing Assets?	Hazard(s) to be Mitigated	Goals Met	Lead and Support Agencies	Potential Funding Sources	Estimated Benefits	Estimated Cost	Timeline	Priority	Mitigation Category	CRS Category
2021-WILDWOOD-001 (former CW-1a and CW-1b)	Repetitive Loss Mitigation	<p>Problem: The City has 23 remaining unmitigated repetitive loss properties and 4 severe repetitive loss properties. The northwest portion of the City for Pine Ave. to 26th Ave. west of Park Blvd. is the area with the majority of RL and SRL properties.</p> <p>Solution: The City will conduct outreach to RL/SRL property owners and provide information on mitigation alternatives. After preferred mitigation measures are identified, collect required property-owner information and develop a FEMA grant application and BCA to obtain funding to implement acquisition/purchase/moving/elevating residential homes in the flood prone areas that experience frequent flooding (high risk areas).</p>	Existing	Flood, Severe Weather	1	NFIP Floodplain Administrator, supported by homeowners	FEMA HMGP and FMA, BRIC, local cost share by residents	Eliminates flood damage to homes and residents, creates open space for the municipality increasing flood storage.	\$4M	Within 5 years	High	SIP	PP
2021-WILDWOOD-002	Floodprone Areas Mitigation	<p>Problem: Floodprone areas in the City include 500 W. Rio Grande Ave. near the Silver Bullet dock and all along near Beach Creek, Boathouse, and Uries restaurants.</p> <p>Solution: The City will elevate bulkheads and parking lots in floodprone areas. In areas where private ownership exists, the City will encourage property owners to install or raise their bulkheads.</p>	Existing	Flood, Severe Weather, Coastal Erosion	1	Engineer, Public Works	HMGP, BRIC, City budget	Reduction in flood risk	High	Within 5 years	High	SIP	SP, PP
2021-WILDWOOD-003	City Bulkhead Retrofit and Replacement	<p>Problem: Westside bayfront and waterfront bulkheads throughout the City do not have standard elevation and require either elevation or complete reconstruction to provide proper protection.</p> <p>Solution: Vinyl bulkhead with concrete caps will be constructed at the following locations along Otten's Harbor:</p> <ul style="list-style-type: none"> Susquehanna Avenue, south side of Otten's Harbor, 50 lf. 	Existing	Flood, Coastal Erosion	1	Engineer, Public Works	HMGP, BRIC, City budget	Reduction in coastal flood risk	High	Within 5 years	High	SIP	SP



Initiative Number	Mitigation Initiative Name	Description of the Problem and Solution	New or Existing Assets?	Hazard(s) to be Mitigated	Goals Met	Lead and Support Agencies	Potential Funding Sources	Estimated Benefits	Estimated Cost	Timeline	Priority	Mitigation Category	CRS Category
		<ul style="list-style-type: none"> Susquehanna Avenue, north side of Otten’s Harbor, 50 lf. Hudson Avenue, south side of Otten’s Harbor, 55 lf. Hudson Avenue, north side of Otten’s Harbor, 50 lf. <p>The existing bulkheads in these areas are failing and are being the City required 8 feet NAVD88 elevation. In addition, drainage improvements at Susquehanna Avenue on the north side of Otten’s Harbor will be completed. Concrete cap, footing, and fill for existing bulkheads at Mediterranean Avenue, 55 lf. (north side of Otten’s Harbor); Niagara Avenue, 50 lf. (north side of Otten’s Harbor); and Montgomery Street (west), 65 lf.</p>											
2021-WILDWOOD-004	Public Works Flood Protection	<p>Problem: One of the City’s Public Works buildings has been damaged by flooding and needs to be rebuilt.</p> <p>Solution: A new building will be constructed above the BFE at the Public Works facility which has had the grade of the yard raised recently above BFE.</p>	Existing	Flood	1, 3	Engineer, Public Works	City budget	Reduction in flood risk	High	Within 2 years	High	SIP	PP
2021-WILDWOOD-005	Roadway Elevations	<p>Problem: Park Blvd. as well as many of the City’s west side streets and roadways need to be elevated.</p> <p>Solution: The City will elevate and regrade Park Blvd and the City’s west side streets. This will include upgrades to curbing as necessary.</p>	Existing	Severe Weather, Flood	1	Engineer, Public Works	HMGP, BRIC, City budget	Reduction in flood risk	High	Within 5 years	High	SIP	PP, SP
2021-WILDWOOD-006	Engineered Dune	<p>Problem: The City lacks an engineered dune system to protect from storm surge and coastal erosion.</p> <p>Solution: The City will work with the USACE to complete construction of an engineered dune on the oceanfront. Sand will be borrowed from the beach in order to build the dune. The City will be responsible for maintenance of the dune and will monitor the beach face for any</p>	N/A	Flood, Coastal Erosion, Hurricane, Nor’Easter, Climate Change and Sea Level Rise	3, 5	USACE	USACE, City budget	Protection of the City from storm surge and erosion events.	High	Within 5 years	High	NSP	NR



Initiative Number	Mitigation Initiative Name	Description of the Problem and Solution	New or Existing Assets?	Hazard(s) to be Mitigated	Goals Met	Lead and Support Agencies	Potential Funding Sources	Estimated Benefits	Estimated Cost	Timeline	Priority	Mitigation Category	CRS Category
		negative coastal erosion impacts that may require modifications.											
2021-WILDWOOD-007	Backup Power for Critical Facilities	<p>Problem: Backup power sources are necessary to maintain critical services for critical facilities. Wildwood High School, Glenwood Ave. Elementary School, and the City of Wildwood Public Works Facility lack backup power.</p> <p>Solution: The Engineer will research what size generators are needed to power the Wildwood High School, Glenwood Ave. Elementary School, and the City of Wildwood Public Works Facility. The City will then purchase and install the selected generators and necessary electrical components to supply backup power to the selected facilities.</p>	Existing	All Hazards	1, 3	Engineer, Facility managers	FEMA HMGP and BRIC, USDA Community Facilities Grant Program, Emergency Management Performance Grants (EMPG) Program, Municipal Budget	Ensures continuity of operations of critical facilities	\$50,000 per generator	Within 5 years	High	SIP	ES
2021-WILDWOOD-008	Bulkhead Ordinance	<p>Problem: The City lacks a bulkhead height requirement. This leads to a variety of different heights in the bulkhead as many bulkheads are privately owned, leading to inconsistent levels of protection.</p> <p>Solution: The City will develop and adopt a bulkhead ordinance which requires a standard elevation.</p>	Existing	Coastal Erosion, Flood	1	Administration	City budget	Standard level of protection	Staff time	Within 2 years	High	LPR	PR, SP
2021-WILDWOOD-009	Watershed Management Plan	<p>Problem: The City is in the process of developing a watershed master plan for the CRS program which will include a detailed analysis of NOAA predicted sea level rise for 2100.</p> <p>Solution: The City will complete and adopt the Watershed Management Plan.</p>	New and Existing	Flood, Severe Weather, Coastal Erosion	1, 3	Administration	City budget	Increased floodplain management	Staff time for adoption	Within 2 years	High	LPR	PR
2021-WILDWOOD-010	Adopt Debris Management Plan	<p>Problem: The City's Disaster Debris Management Plan is in draft form</p> <p>Solution: The City will complete and adopt the plan.</p>	N/A	All Hazards	4, 6	Administration	City budget	Plan in place for disaster response	Staff time	Within 6 months	High	LPR	ES
2021-WILDWOOD-011	Pacific Avenue Drainage Project	<p>Problem: Pacific Avenue requires drainage improvements.</p> <p>Solution: The City will conduct drainage and stormwater improvements on Pacific Avenue.</p>	Existing	Flood, Severe Weather	1	Engineer, Public Works	HMGP, BRIC, City budget	Reduction in flood risk	High	Within 5 years	High	SIP	SP



Initiative Number	Mitigation Initiative Name	Description of the Problem and Solution	New or Existing Assets?	Hazard(s) to be Mitigated	Goals Met	Lead and Support Agencies	Potential Funding Sources	Estimated Benefits	Estimated Cost	Timeline	Priority	Mitigation Category	CRS Category
2021-WILDWOOD-012	Leaming Avenue Pump Station and Outfall Project	Problem: Leaming Avenue requires a stormwater pump and new outfall pipes. Solution: The City will install a pump station and remove and replace outfall pipes. Funding is in place for the pump station through the NJ Risk reduction resiliency grant. Funding is needed for the removal of old outfall pipes.	Existing	Flood, Severe Weather	1	Engineer, Public Works	NJ Risk reduction resiliency grant, HMGP, BRIC, City budget	Reduction in flood risk	High	Within 5 years	High	SIP	SP
2021-WILDWOOD-013	Living Shoreline Along Mediterranean Avenue and W Andrews Avenue	Problem: Mediterranean Avenue and W Andrews Avenue are experiencing erosion. Solution: A living shoreline will be constructed along Mediterranean Avenue and W Andrews Avenue to protect the nearby neighborhood. The proposal is to construct the living shoreline with a gabion core and bio logs, berms, and native plantings and will stretch 1,100 lf.	Existing	Coastal Erosion	3, 5	Administration	HMGP, BRIC, City budget, environmental grants	Reduction in coastal erosion	High	Within 5 years	High	NSP	NR
2021-WILDWOOD-014	W Youngs Avenue Drainage Pipe	Problem: A drainage pipe that drains W Youngs Avenue is crushed and needs to be replaced. The pipe traverses the W Youngs Avenue right of way and Susquehanna Avenue right of way. The lines provide flood management for Maxwell Field athletic complex and the neighborhood to the south of this complex. This is currently an 18 to 24-inch line. Solution: The pipe will be upgraded to a 30-inch line to provide adequate service. This system extends almost 1,700 lf. Check valves will be installed on either end of the system.	Existing	Flood, Severe Weather	1	Engineer, Public Works	HMGP, BRIC, City budget	Reduction in flood risk	\$50,000	Within 3 years	High	SIP	SP

Notes:

Acronyms and Abbreviations:

CAV Community Assistance Visit
 CRS Community Rating System
 DPW Department of Public Works
 FEMA Federal Emergency Management Agency
 FPA Floodplain Administrator
 HMA Hazard Mitigation Assistance

Potential FEMA HMA Funding Sources:

FMA Flood Mitigation Assistance Grant Program
 HMGP Hazard Mitigation Grant Program
 BRIC Building Resilient Infrastructure and Communities

Timeline:

The time required for completion of the project upon implementation

Cost:

The estimated cost for implementation.

Benefits:





N/A Not applicable
NFIP National Flood Insurance Program
OEM Office of Emergency Management

A description of the estimated benefits, either quantitative and/or qualitative.

Mitigation Category:

- *Local Plans and Regulations (LPR)* – These actions include government authorities, policies or codes that influence the way land and buildings are being developed and built.
- *Structure and Infrastructure Project (SIP)* - These actions involve modifying existing structures and infrastructure to protect them from a hazard or remove them from a hazard area. This could apply to public or private structures as well as critical facilities and infrastructure. This type of action also involves projects to construct manmade structures to reduce the impact of hazards.
- *Natural Systems Protection (NSP)* – These are actions that minimize damage and losses and preserve or restore the functions of natural systems.
- *Education and Awareness Programs (EAP)* – These are actions to inform and educate citizens, elected officials, and property owners about hazards and potential ways to mitigate them. These actions may also include participation in national programs, such as StormReady and Firewise Communities.

CRS Category:

- *Preventative Measures (PR)* - Government, administrative or regulatory actions, or processes that influence the way land and buildings are developed and built. Examples include planning and zoning, floodplain local laws, capital improvement programs, open space preservation, and storm water management regulations.
- *Property Protection (PP)* - These actions include public activities to reduce hazard losses or actions that involve (1) modification of existing buildings or structures to protect them from a hazard or (2) removal of the structures from the hazard area. Examples include acquisition, elevation, relocation, structural retrofits, storm shutters, and shatter-resistant glass.
- *Public Information (PI)* - Actions to inform and educate citizens, elected officials, and property owners about hazards and potential ways to mitigate them. Actions include outreach projects, real estate disclosure, hazard information centers, and educational programs for school-age children and adults.
- *Natural Resource Protection (NR)* - Actions that minimize hazard loss and preserve or restore the functions of natural systems. Actions include sediment and erosion control, stream corridor restoration, watershed management, forest and vegetation management, and wetland restoration and preservation.
- *Structural Flood Control Projects (SP)* - Actions that involve the construction of structures to reduce the impact of a hazard. Structures include dams, setback levees, floodwalls, retaining walls, and safe rooms.
- *Emergency Services (ES)* - Actions that protect people and property during and immediately following a disaster or hazard event. Services include warning systems, emergency response services, and the protection of essential facilities.



Table 9.15-16. Summary of Prioritization of Actions

Initiative Number	Mitigation Initiative Name	Life Safety	Property Protection	Cost Effectiveness	Technical	Political	Legal	Fiscal	Environmental	Social	Administrative	Multi-Hazard	Timeline	Agency Champion	Other Community Objectives	Total	High / Medium / Low
2021-WILDWOOD-001 (former CW-1a and CW-1b)	Repetitive Loss Mitigation	1	1	1	1	1	1	0	1	0	0	1	0	1	1	10	High
2021-WILDWOOD-002	Floodprone Areas Mitigation	1	1	1	1	1	0	0	1	1	1	1	0	1	1	11	High
2021-WILDWOOD-003	City Bulkhead Retrofit and Replacement	1	1	1	1	1	0	0	1	1	1	1	0	1	1	11	High
2021-WILDWOOD-004	Public Works Flood Protection	1	1	1	1	1	1	1	1	1	1	1	1	1	1	14	High
2021-WILDWOOD-005	Roadway Elevations	1	1	1	1	1	1	0	1	1	1	1	1	1	1	13	High
2021-WILDWOOD-006	Engineered Dune	0	1	1	1	1	1	1	1	1	1	1	0	1	1	12	High
2021-WILDWOOD-007	Backup Power for Critical Facilities	1	1	1	1	1	1	0	1	1	1	1	0	1	1	12	High
2021-WILDWOOD-008	Bulkhead Ordinance	0	1	1	1	1	1	1	1	1	1	1	1	1	1	13	High
2021-WILDWOOD-009	Watershed Management Plan	0	1	1	1	1	1	1	1	1	1	1	1	1	1	13	High
2021-WILDWOOD-010	Adopt Debris Management Plan	0	1	1	1	1	1	1	1	1	1	1	1	1	1	13	High
2021-WILDWOOD-011	Pacific Avenue Drainage Project	0	1	1	1	1	1	0	1	1	1	1	0	1	1	11	High





Initiative Number	Mitigation Initiative Name	Life Safety	Property Protection	Cost Effectiveness	Technical	Political	Legal	Fiscal	Environmental	Social	Administrative	Multi-Hazard	Timeline	Agency Champion	Other Community Objectives	Total	High / Medium / Low
2021-WILDWOOD-012	Leaming Aveue Pump Station and Outfall Project	0	1	1	1	1	1	0	1	1	1	1	0	1	1	11	High
2021-WILDWOOD-013	Living Shoreline Along Mediterranean Avenue and W Andrews Avenue	0	1	1	1	1	0	0	1	1	1	0	0	1	1	9	High
2021-WILDWOOD-014	W Youngs Avenue Drainage Pipe	1	1	0	1	1	1	0	1	0	0	1	0	1	1	9	High

Notes: Section 6 (Mitigation Strategy) conveys guidance on prioritizing mitigation actions. Low (0-4), Medium (5-8), High (9-14).



This action has been identified as being of highest importance to the municipality and an action that the municipality would like to complete as soon as funding is received.



Table 9.15-17. Analysis of Mitigation Actions by Hazard and Category

Hazard	Prevention	Property Protection	Public Education and Awareness	Natural Resource Protection	Emergency Services	Structural Projects	Climate Resilient	Community Capacity Building
Climate Change and Sea Level Rise				X	X			X
Coastal Erosion	X			X	X	X	X	X
Disease Outbreak (new)					X			X
Drought (new)					X			X
Flood	X	X		X	X	X		X
Hurricane				X	X			X
Nor'Easter				X	X			X
Severe Weather	X	X			X	X		X
Severe Winter Weather					X			X
Tsunami					X			X
Wildfire					X			X

Note: Section 6 (Mitigation Strategy) provides for an explanation of the mitigation categories.

RED high ranked hazard

ORANGE medium ranked hazard

YELLOW low ranked hazard



Figure 9.15-1. City of Wildwood Hazard Area Extent and Location Map 1

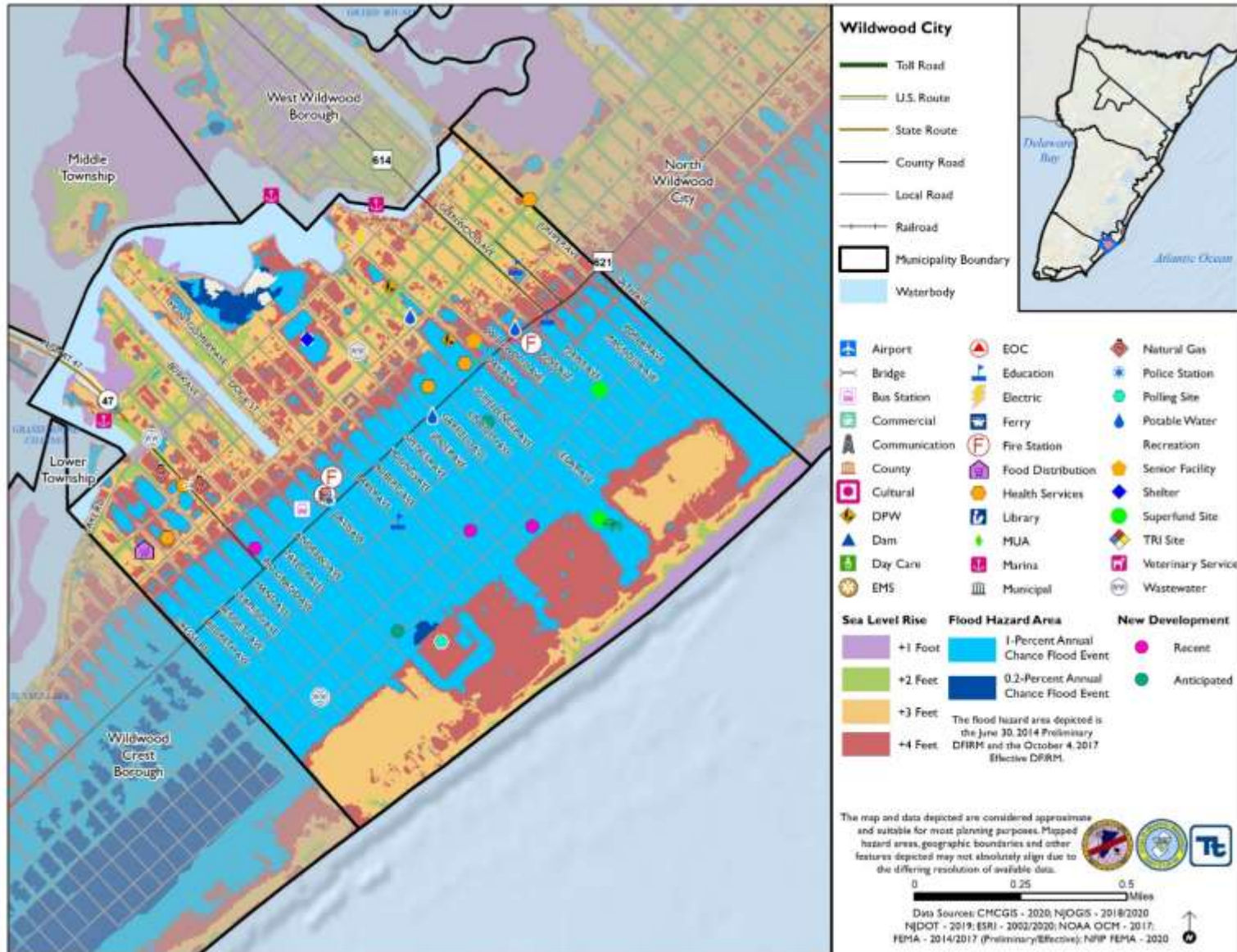




Figure 9.15-2. City of Wildwood Hazard Area Extent and Location Map 2

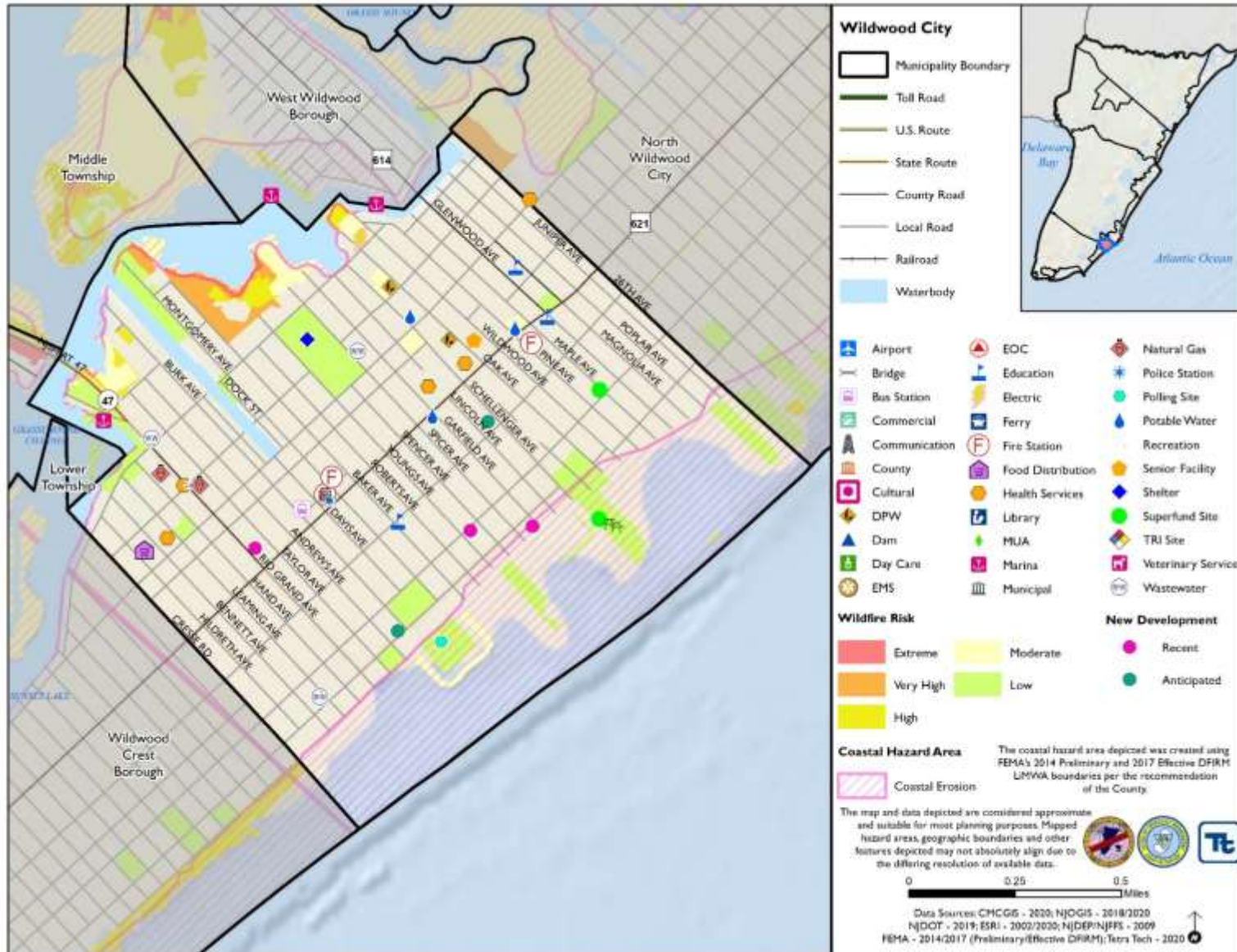
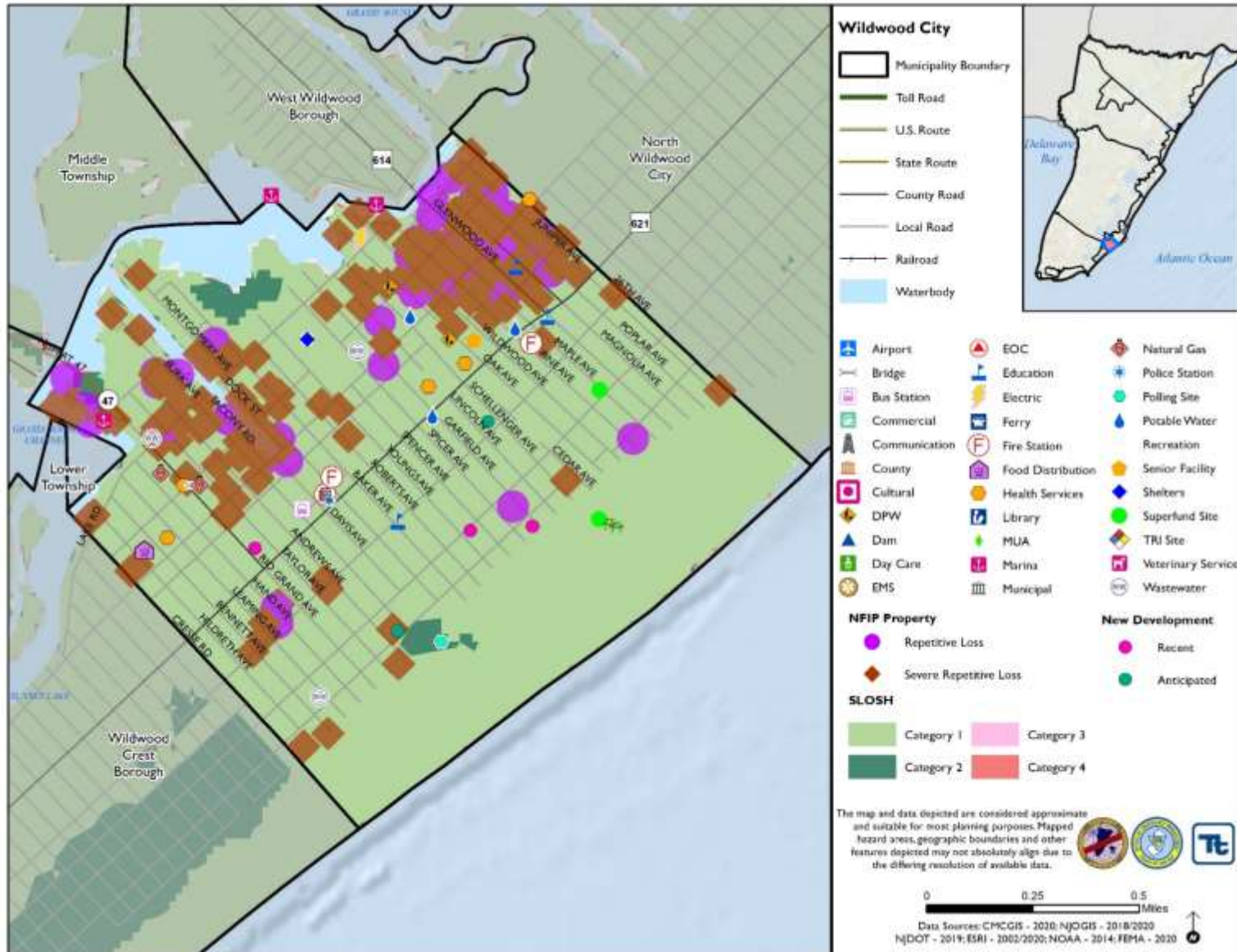




Figure 9.15-3. City of Wildwood Hazard Area Extent and Location Map 3





Action Worksheet			
Project Name:	Repetitive Loss Mitigation		
Project Number:	2021-WILDWOOD -001 (former CW-1a and CW-1b)		
Risk / Vulnerability			
Hazard(s) of Concern:	Flood, Severe Weather		
Description of the Problem:	The City has 23 remaining unmitigated repetitive loss properties and 4 severe repetitive loss properties. The northwest portion of the City for Pine Ave. to 26th Ave. west of Park Blvd. is the area with the majority of RL and SRL properties.		
Action or Project Intended for Implementation			
Description of the Solution:	The City will conduct outreach to the RL/SRL property owners and provide information on mitigation alternatives. After preferred mitigation measures are identified, collect required property-owner information and develop a FEMA grant application and BCA to obtain funding to implement acquisition/purchase/moving/elevating residential homes in the flood prone areas that experience frequent flooding (high risk areas).		
Is this project related to a Critical Facility or Lifeline?	Yes <input type="checkbox"/>	No <input checked="" type="checkbox"/>	
Level of Protection:	1% annual chance flood event + freeboard (<i>in accordance with flood ordinance</i>)	Estimated Benefits (losses avoided):	Eliminates flood damage to homes and residents, creates open space for the municipality increasing flood storage.
Useful Life:	Acquisition: Lifetime Elevation: 30 years (residential)	Goals Met:	1
Estimated Cost:	\$4 M	Mitigation Action Type:	Structure and Infrastructure Project
Plan for Implementation			
Prioritization:	High	Desired Timeframe for Implementation:	6-12 months
Estimated Time Required for Project Implementation:	Three years	Potential Funding Sources:	FEMA HMGP and FMA, BRIC, local cost share by residents
Responsible Organization:	NFIP Floodplain Administrator, supported by homeowners	Local Planning Mechanisms to be Used in Implementation if any:	Hazard Mitigation
Three Alternatives Considered (including No Action)			
Alternatives:	Action	Estimated Cost	Evaluation
	No Action	\$0	Current problem continues
	Elevate homes	\$500,000	When this area floods, the entire area is impacted; elevating homes would not eliminate the problem and still lead to road closures and impassable roads
Elevate roads	\$500,000	Elevated roadways would not protect the homes from flood damages	
Progress Report (for plan maintenance)			
Date of Status Report:			
Report of Progress:			
Update Evaluation of the Problem and/or Solution:			



Action Worksheet		
Project Name:	Repetitive Loss Mitigation	
Project Number:	2021-WILDWOOD -001 (former CW-1a and CW-1b)	
Criteria	Numeric Rank (-1, 0, 1)	Provide brief rationale for numeric rank when appropriate
Life Safety	1	Families moved out of high-risk flood areas.
Property Protection	1	Properties removed from high-risk flood areas.
Cost-Effectiveness	1	Cost-effective project
Technical	1	Technically feasible project
Political	1	
Legal	1	The City has the legal authority to conduct the project.
Fiscal	0	Project will require grant funding.
Environmental	1	
Social	0	Project would remove families from the flood prone areas of the City.
Administrative	0	
Multi-Hazard	1	Flood, Severe Weather
Timeline	0	
Agency Champion	1	NFIP Floodplain Administrator, supported by homeowners
Other Community Objectives	1	
Total	10	
Priority (High/Med/Low)	High	



Action Worksheet			
Project Name:	Floodprone Areas Mitigation		
Project Number:	2021-WILDWOOD -002		
Risk / Vulnerability			
Hazard(s) of Concern:	Flood, Severe Weather, Coastal Erosion		
Description of the Problem:	Floodprone areas in the City include 500 W. Rio Grande Ave. near the Silver Bullet dock and all along near Beach Creek, Boathouse, and Uries restaurants.		
Action or Project Intended for Implementation			
Description of the Solution:	The City will conduct a flood study to determine the appropriate level of protection for flooding. The City will then elevate bulkheads and parking lots in floodprone areas. In areas where private ownership exists, the City will encourage property owners to install or raise their bulkheads.		
Is this project related to a Critical Facility or Lifeline?	Yes <input type="checkbox"/>	No <input checked="" type="checkbox"/>	
Level of Protection:	TBD by flood study	Estimated Benefits (losses avoided):	Reduction in flood risk
Useful Life:	30-50 years	Goals Met:	1
Estimated Cost:	High	Mitigation Action Type:	Structure and Infrastructure Project
Plan for Implementation			
Prioritization:	High	Desired Timeframe for Implementation:	Within 5 years
Estimated Time Required for Project Implementation:	Within 5 years	Potential Funding Sources:	HMGP, BRIC, City budget
Responsible Organization:	Engineer, Public Works	Local Planning Mechanisms to be Used in Implementation if any:	Hazard mitigation, Stormwater management
Three Alternatives Considered (including No Action)			
Alternatives:	Action	Estimated Cost	Evaluation
	No Action	\$0	Current problem continues
	Abandon floodprone areas	High	Costly and negative social/economic impacts
	Elevate all infrastructure and buildings	High	Costly and not legally possible for privately owned areas
Progress Report (for plan maintenance)			
Date of Status Report:			
Report of Progress:			
Update Evaluation of the Problem and/or Solution:			



Action Worksheet		
Project Name:	Floodprone Areas Mitigation	
Project Number:	2021-WILDWOOD -002	
Criteria	Numeric Rank (-1, 0, 1)	Provide brief rationale for numeric rank when appropriate
Life Safety	1	Protects lives from flood risk
Property Protection	1	Protects private property and public infrastructure from flood risk
Cost-Effectiveness	1	
Technical	1	
Political	1	
Legal	0	Some private property owners will need to take part in project
Fiscal	0	Project requires funding support
Environmental	1	
Social	1	
Administrative	1	
Multi-Hazard	1	Flood, Severe Weather, Coastal Erosion
Timeline	0	Within 5 years
Agency Champion	1	Engineer, Public Works
Other Community Objectives	1	
Total	11	
Priority (High/Med/Low)	High	



Action Worksheet			
Project Name:	City Bulkhead Retrofit and Replacement		
Project Number:	2021-WILDWOOD -003		
Risk / Vulnerability			
Hazard(s) of Concern:	Flood, Coastal Erosion		
Description of the Problem:	Westside bayfront and waterfront bulkheads throughout the City do not have standard elevation and require either elevation or complete reconstruction to provide proper protection.		
Action or Project Intended for Implementation			
Description of the Solution:	Vinyl bulkhead with concrete caps will be constructed at the following locations along Otten's Harbor: <ul style="list-style-type: none"> • Susquehanna Avenue, south side of Otten's Harbor, 50 lf. • Susquehanna Avenue, north side of Otten's Harbor, 50 lf. • Hudson Avenue, south side of Otten's Harbor, 55 lf. • Hudson Avenue, north side of Otten's Harbor, 50 lf. The existing bulkheads in these areas are failing and are being the City required 8 feet NAVD88 elevation. In addition, drainage improvements at Susquehanna Avenue on the north side of Otten's Harbor will be completed. Concrete cap, footing, and fill for existing bulkheads at Mediterranean Avenue, 55 lf. (north side of Otten's Harbor); Niagara Avenue, 50 lf. (north side of Otten's Harbor); and Montgomery Street (west), 65 lf.		
Is this project related to a Critical Facility or Lifeline?	Yes <input type="checkbox"/>	No <input checked="" type="checkbox"/>	
Level of Protection:	Elevation determined by survey	Estimated Benefits (losses avoided):	Reduction in coastal flood risk
Useful Life:	30-50 years	Goals Met:	1
Estimated Cost:	High	Mitigation Action Type:	Structure and Infrastructure Project
Plan for Implementation			
Prioritization:	High	Desired Timeframe for Implementation:	Within 5 years
Estimated Time Required for Project Implementation:	Within 5 years	Potential Funding Sources:	HMGP, BRIC, City budget
Responsible Organization:	Engineer, Public Works	Local Planning Mechanisms to be Used in Implementation if any:	Hazard mitigation
Three Alternatives Considered (including No Action)			
Alternatives:	Action	Estimated Cost	Evaluation
	No Action	\$0	Current problem continues
	Abandon waterfront areas	High	Costly and negative social/economic impacts
	Elevate all infrastructure and buildings	High	Costly and not legally possible for privately owned areas
Progress Report (for plan maintenance)			
Date of Status Report:			
Report of Progress:			
Update Evaluation of the Problem and/or Solution:			



Action Worksheet		
Project Name:	City Bulkhead Retrofit and Replacement	
Project Number:	2021-WILDWOOD -003	
Criteria	Numeric Rank (-1, 0, 1)	Provide brief rationale for numeric rank when appropriate
Life Safety	1	Protects lives from flood and coastal erosion risk
Property Protection	1	Protects private property and public infrastructure from and coastal flood risk
Cost-Effectiveness	1	
Technical	1	
Political	1	
Legal	0	May require permitting
Fiscal	0	Project requires funding support
Environmental	1	
Social	1	
Administrative	1	
Multi-Hazard	1	Flood, Coastal Erosion
Timeline	0	Within 5 years
Agency Champion	1	Engineer, Public Works
Other Community Objectives	1	
Total	11	
Priority (High/Med/Low)	High	



Action Worksheet			
Project Name:	Roadway Elevations		
Project Number:	2021-WILDWOOD-005		
Risk / Vulnerability			
Hazard(s) of Concern:	Flood, Severe Weather		
Description of the Problem:	Park Blvd. as well as many of the City's west side streets and roadways are prone to flooding due to being low-lying. When roadways are flooded it prohibits safe access by emergency vehicles in residential areas.		
Action or Project Intended for Implementation			
Description of the Solution:	The City will elevate and regrade Park Blvd and the City's west side streets. This will include upgrades to curbing as necessary. The road-raising project will provide safe access for residents and emergency vehicles during and after Severe Weather events. The new roadway will decrease the amount of maintenance required along the roadway relative to buckled asphalt and debris-filled drainage structures.		
Is this project related to a Critical Facility?	Yes <input type="checkbox"/>	No <input checked="" type="checkbox"/>	
Level of Protection:	6" to 12" elevation and stormwater upgrades	Estimated Benefits (losses avoided):	Flood risk reduced.
Useful Life:	50 years	Goals Met:	1
Estimated Cost:	High	Mitigation Action Type:	Structure and Infrastructure Project
Plan for Implementation			
Prioritization:	High	Desired Timeframe for Implementation:	Within 5 years
Estimated Time Required for Project Implementation:	1 year	Potential Funding Sources:	HMGP, BRIC, City budget
Responsible Organization:	Engineer, Public Works	Local Planning Mechanisms to be Used in Implementation if any:	Hazard mitigation, Stormwater management
Three Alternatives Considered (including No Action)			
Alternatives:	Action	Estimated Cost	Evaluation
	No Action	\$0	Problem continues.
	Remove flood prone roadways	N/A	Loss of access to neighborhoods, increased emergency risk
	Buyout properties that exist along flood prone roadways	\$Tens of Millions	Costly, loss of large portion of community
Progress Report (for plan maintenance)			
Date of Status Report:			
Report of Progress:			
Update Evaluation of the Problem and/or Solution:			



Evaluation and Prioritization		
Project Name:	Roadway Elevations	
Project Number:	2021-WILDWOOD-005	
Criteria	Numeric Rank (-1, 0, 1)	Provide brief rationale for numeric rank when appropriate
Life Safety	1	Project will protect emergency access
Property Protection	1	Project will protect roadway from flood damage
Cost-Effectiveness	1	
Technical	1	The project is technically feasible
Political	1	
Legal	1	The City has the legal authority to complete the project
Fiscal	0	Project requires funding support
Environmental	1	
Social	1	
Administrative	1	
Multi-Hazard	1	Flood, Severe Weather
Timeline	1	Within 5 years
Agency Champion	1	Engineer, Public Works
Other Community Objectives	1	
Total	13	
Priority (High/Med/Low)	High	



Action Worksheet			
Project Name:	Backup Power for Critical Facilities		
Project Number:	2021-WILDWOOD-007		
Risk / Vulnerability			
Hazard(s) of Concern:	All Hazards		
Description of the Problem:	Backup power sources are necessary to maintain critical services for critical facilities. Wildwood High School, Glenwood Ave. Elementary School, and the City of Wildwood Public Works Facility lack backup power.		
Action or Project Intended for Implementation			
Description of the Solution:	The Engineer will research what size generators are needed to power the Wildwood High School, Glenwood Ave. Elementary School, and the City of Wildwood Public Works Facility. The City will then purchase and install the selected generators and necessary electrical components to supply backup power to the selected facilities.		
Is this project related to a Critical Facility?	Yes <input checked="" type="checkbox"/>	No <input type="checkbox"/>	
Level of Protection:	N/A	Estimated Benefits (losses avoided):	Ensures continuity of operations of critical facilities
Useful Life:	20 years	Goals Met:	1, 3
Estimated Cost:	\$50,000 per generator	Mitigation Action Type:	Structure and Infrastructure Projects (SIP)
Plan for Implementation			
Prioritization:	High	Desired Timeframe for Implementation:	Within 5 years
Estimated Time Required for Project Implementation:	1 year	Potential Funding Sources:	FEMA HMGP and BRIC, USDA Community Facilities Grant Program, Emergency Management Performance Grants (EMPG) Program, Municipal Budget
Responsible Organization:	Engineer, Facility managers	Local Planning Mechanisms to be Used in Implementation if any:	Hazard Mitigation, Emergency Management
Three Alternatives Considered (including No Action)			
Alternatives:	Action	Estimated Cost	Evaluation
	No Action	\$0	Problem continues.
	Install solar panels	\$100,000	Weather dependent; need large amount of space for installation; expensive if repairs needed
	Install wind turbine	\$100,000	Weather dependent; poses a threat to wildlife; expensive repairs if needed
Progress Report (for plan maintenance)			
Date of Status Report:			
Report of Progress:			
Update Evaluation of the Problem and/or Solution:			



Action Worksheet		
Project Name:	Backup Power for Critical Facilities	
Project Number:	2021-WILDWOOD-007	
Criteria	Numeric Rank (-1, 0, 1)	Provide brief rationale for numeric rank when appropriate
Life Safety	1	Project will protect critical services of critical facilities
Property Protection	1	Project will protect buildings from power loss.
Cost-Effectiveness	1	
Technical	1	
Political	1	
Legal	1	The City has the legal authority to complete the project.
Fiscal	0	Project requires funding support.
Environmental	1	
Social	1	
Administrative	1	
Multi-Hazard	1	All Hazards
Timeline	0	Within 5 years
Agency Champion	1	Engineer, Facility managers
Other Community Objectives	1	
Total	12	
Priority (High/Med/Low)	High	



Action Worksheet			
Project Name:	Pacific Avenue Drainage Project		
Project Number:	2021-WILDWOOD-011		
Risk / Vulnerability			
Hazard(s) of Concern:	Flood, Severe Weather		
Description of the Problem:	Pacific Avenue requires drainage improvements.		
Action or Project Intended for Implementation			
Description of the Solution:	The City will conduct drainage and stormwater improvements on Pacific Avenue.		
Is this project related to a Critical Facility?	Yes <input checked="" type="checkbox"/>	No <input type="checkbox"/>	
Level of Protection:	TBD	Estimated Benefits (losses avoided):	Reduction in flooding
Useful Life:	50 years	Goals Met:	1
Estimated Cost:	High	Mitigation Action Type:	Structure and Infrastructure Project
Plan for Implementation			
Prioritization:	High	Desired Timeframe for Implementation:	Within 2 years
Estimated Time Required for Project Implementation:	1 year	Potential Funding Sources:	HMGP, BRIC, City budget
Responsible Organization:	Engineer, Public Works	Local Planning Mechanisms to be Used in Implementation if any:	Hazard mitigation, Stormwater management
Three Alternatives Considered (including No Action)			
Alternatives:	Action	Estimated Cost	Evaluation
	No Action	\$0	Problem continues.
	Raise roadways in the area	\$250,000	Flooding likely to impact property owners
	Elevate homes in the area	\$3 million	Costly and roadways still flood
Progress Report (for plan maintenance)			
Date of Status Report:			
Report of Progress:			
Update Evaluation of the Problem and/or Solution:			



Evaluation and Prioritization		
Project Name:	Pacific Avenue Drainage Project	
Project Number:	2021-WILDWOOD-011	
Criteria	Numeric Rank (-1, 0, 1)	Provide brief rationale for numeric rank when appropriate
Life Safety	0	
Property Protection	1	Project will protect properties in the area from flooding
Cost-Effectiveness	1	
Technical	1	The project is technically feasible
Political	1	
Legal	1	The City is legally able to complete the project
Fiscal	0	Project requires additional funding support
Environmental	1	
Social	1	
Administrative	1	
Multi-Hazard	1	Severe Weather, Flood
Timeline	0	Within 5 years
Agency Champion	1	Engineer, Public Works
Other Community Objectives	1	
Total	11	
Priority (High/Med/Low)	High	



Action Worksheet			
Project Name:	Leaming Aveue Pump Station and Outfall Project		
Project Number:	2021-WILDWOOD-012		
Risk / Vulnerability			
Hazard(s) of Concern:	Flood, Severe Weather		
Description of the Problem:	Leaming Avenue requires a stormwater pump and new outfall pipes to reduce flooding.		
Action or Project Intended for Implementation			
Description of the Solution:	The City will install a pump station and remove and replace outfall pipes. Funding is in place for the pump station through the NJ Risk reduction resiliency grant. Funding is needed for the removal of old outfall pipes.		
Is this project related to a Critical Facility?	Yes <input checked="" type="checkbox"/>	No <input type="checkbox"/>	
Level of Protection:	TBD	Estimated Benefits (losses avoided):	Reduction in flooding
Useful Life:	50 years	Goals Met:	1
Estimated Cost:	High	Mitigation Action Type:	Structure and Infrastructure Project
Plan for Implementation			
Prioritization:	High	Desired Timeframe for Implementation:	Within 5 years
Estimated Time Required for Project Implementation:	1 year	Potential Funding Sources:	NJ Risk reduction resiliency grant, HMGP, BRIC, City budget
Responsible Organization:	Engineer, Public Works	Local Planning Mechanisms to be Used in Implementation if any:	Hazard mitigation, Stormwater management
Three Alternatives Considered (including No Action)			
Alternatives:	Action	Estimated Cost	Evaluation
	No Action	\$0	Problem continues.
	Raise roadways in the area	\$250,000	Flooding likely to impact property owners
	Elevate homes in the area	\$3 million	Costly and roadways still flood
Progress Report (for plan maintenance)			
Date of Status Report:			
Report of Progress:			
Update Evaluation of the Problem and/or Solution:			



Evaluation and Prioritization		
Project Name:	Leaming Aveue Pump Station and Outfall Project	
Project Number:	2021-WILDWOOD-012	
Criteria	Numeric Rank (-1, 0, 1)	Provide brief rationale for numeric rank when appropriate
Life Safety	0	
Property Protection	1	Project will protect properties in the area from flooding
Cost-Effectiveness	1	
Technical	1	The project is technically feasible
Political	1	
Legal	1	The City is legally able to complete the project
Fiscal	0	NJ Risk reduction resiliency grant but project requires additional funding support
Environmental	1	
Social	1	
Administrative	1	
Multi-Hazard	1	Severe Weather, Flood
Timeline	0	Within 5 years
Agency Champion	1	Engineer, Public Works
Other Community Objectives	1	
Total	11	
Priority (High/Med/Low)	High	



Action Worksheet			
Project Name:	Living Shoreline Along Mediterranean Avenue and W Andrews Avenue		
Project Number:	2021-WILDWOOD-013		
Risk / Vulnerability			
Hazard(s) of Concern:	Flood, Landslide		
Description of the Problem:	Mediterranean Avenue and W Andrews Avenue are experiencing erosion.		
Action or Project Intended for Implementation			
Description of the Solution:	A living shoreline will be constructed along Mediterranean Avenue and W Andrews Avenue to protect the nearby neighborhood. The proposal is to construct the living shoreline with a gabion core and bio logs, berms, and native plantings and will stretch 1,100 lf.		
Is this project related to a Critical Facility?	Yes <input type="checkbox"/>	No <input checked="" type="checkbox"/>	
Level of Protection:	N/A	Estimated Benefits (losses avoided):	Coastal erosion risk reduced
Useful Life:	1 year	Goals Met:	3, 5
Estimated Cost:	High	Mitigation Action Type:	Natural Systems Protection
Plan for Implementation			
Prioritization:	High	Desired Timeframe for Implementation:	Within 5 years
Estimated Time Required for Project Implementation:	1 year	Potential Funding Sources:	HMGP, BRIC, City budget, environmental grants
Responsible Organization:	Administration	Local Planning Mechanisms to be Used in Implementation if any:	None
Three Alternatives Considered (including No Action)			
Alternatives:	Action	Estimated Cost	Evaluation
	No Action	\$0	Problem continues.
	Retreat from areas near shoreline	High	Costly, unpopular
	Install bulkhead	High	Environmentally damaging, costly
Progress Report (for plan maintenance)			
Date of Status Report:			
Report of Progress:			
Update Evaluation of the Problem and/or Solution:			



Action Worksheet		
Project Name:	Living Shoreline Along Mediterranean Avenue and W Andrews Avenue	
Project Number:	2021-WILDWOOD-013	
Criteria	Numeric Rank (-1, 0, 1)	Provide brief rationale for numeric rank when appropriate
Life Safety	0	
Property Protection	1	Project will protect properties from erosion damage
Cost-Effectiveness	1	
Technical	1	Project is technically feasible
Political	1	
Legal	0	Permitting for the project is required from NJ DEP and USACE
Fiscal	0	Project requires funding support
Environmental	1	
Social	1	
Administrative	1	
Multi-Hazard	0	Coastal Erosion
Timeline	0	
Agency Champion	1	Administration
Other Community Objectives	1	Restore natural floodplain function
Total	9	
Priority (High/Med/Low)	High	



Action Worksheet			
Project Name:	W Youngs Avenue Drainage Pipe		
Project Number:	2021-WILDWOOD-014		
Risk / Vulnerability			
Hazard(s) of Concern:	Flood, Severe Weather		
Description of the Problem:	A drainage pipe that drains W Youngs Avenue is crushed and needs to be replaced. The pipe traverses the W Youngs Avenue right of way and Susquehanna Avenue right of way. The lines provide flood management for Maxwell Field athletic complex and the neighborhood to the south of this complex. This is currently an 18 to 24-inch line.		
Action or Project Intended for Implementation			
Description of the Solution:	The pipe will be upgraded to a 30-inch line to provide adequate service. This system extends almost 1,700 lf. Check valves will be installed on either end of the system.		
Is this project related to a Critical Facility or Lifeline?	Yes <input type="checkbox"/>	No <input checked="" type="checkbox"/>	
Level of Protection:	30-inch line	Estimated Benefits (losses avoided):	Reduction in flood risk
Useful Life:	30 years	Goals Met:	1
Estimated Cost:	\$50,000	Mitigation Action Type:	Structure and Infrastructure Projects
Plan for Implementation			
Prioritization:	High	Desired Timeframe for Implementation:	Within 3 years
Estimated Time Required for Project Implementation:	6 months	Potential Funding Sources:	HMGP, municipal budget
Responsible Organization:	Engineer, Public Works	Local Planning Mechanisms to be Used in Implementation if any:	Hazard mitigation planning
Three Alternatives Considered (including No Action)			
Alternatives:	Action	Estimated Cost	Evaluation
	No Action	\$0	Current problem continues
	Elevate roadway and homes impacted by flooding	\$millions	Costly and may not solve problem
	Relocate properties impacted by flooding	N/A	Not possible
Progress Report (for plan maintenance)			
Date of Status Report:			
Report of Progress:			
Update Evaluation of the Problem and/or Solution:			



Action Worksheet		
Project Name:	W Youngs Avenue Drainage Pipe	
Project Number:	2021-WILDWOOD-014	
Criteria	Numeric Rank (-1, 0, 1)	Provide brief rationale for numeric rank when appropriate
Life Safety	1	Protects life from flooding.
Property Protection	1	Protects roadway and property from flood damage
Cost-Effectiveness	0	
Technical	1	Technically feasible project
Political	1	
Legal	1	The City has the legal authority to conduct the project.
Fiscal	0	Project will require grant funding.
Environmental	1	
Social	0	Project would reduce flooding impacts
Administrative	0	
Multi-Hazard	1	Flood, Severe Weather
Timeline	0	Within 3 years
Agency Champion	1	Engineer, Public Works
Other Community Objectives	1	
Total	9	
Priority (High/Med/Low)	High	